

For Research Use Only

MTA1 Recombinant monoclonal antibody

Catalog Number:87979-1-RR



Basic Information

Catalog Number: 87979-1-RR	GenBank Accession Number: NM_004689	Purification Method: Protein A purification
Size: 100ul , Concentration: 1000 µg/ml by Nanodrop;	GeneID (NCBI): 9112	CloneNo.: 253519C10
Source: Rabbit	UNIPROT ID: Q13330	Recommended Dilutions: WB: 1:2000-1:10000 IF/ICC: 1:250-1:1000
Isotype: IgG	Full Name: metastasis associated 1	
Immunogen Catalog Number: AG30994	Calculated MW: 81 kDa	
	Observed MW: 70-80 kDa	

Applications

Tested Applications:
WB, IF/ICC, ELISA

Species Specificity:
human, mouse

Positive Controls:

WB : HEK-293T cells, HeLa cells, MCF-7 cells, Jurkat cells, A549 cells, NIH/3T3 cells

IF/ICC : HeLa cells, NIH/3T3 cells

Background Information

Metastasis-associated protein 1 (MTA1) is a member of the MTA family, which is involved in regulating DNA-based biological processes (PMID: 25332144). MTA1 is an integral part of the nucleosome remodeling histone deacetylase complex (NuRD complex) and regulates nucleosome remodeling and deacetylation by stabilizing the NuRD complex and related proteins (PMID: 12419236). MTA1 expression is associated with tumor malignancy in several cancers.

Storage

Storage:
Store at -20°C. Stable for one year after shipment.

Storage Buffer:
PBS with 0.02% sodium azide and 50% glycerol, pH7.3

Aliquoting is unnecessary for -20°C storage

*** 20ul sizes contain 0.1% BSA

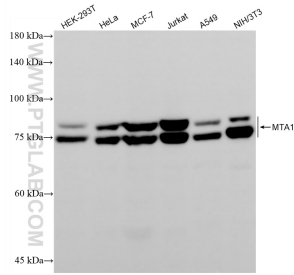
For technical support and original validation data for this product please contact:

T: 1 (888) 4PTGLAB (1-888-478-4522) (toll free in USA), or 1(312) 455-8498 (outside USA)

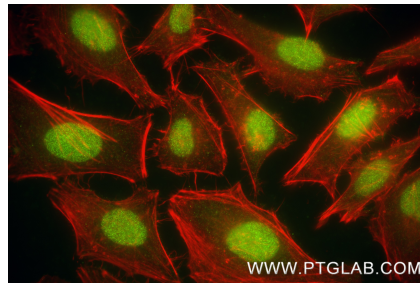
E: proteintech@ptglab.com
W: ptglab.com

This product is exclusively available under Proteintech Group brand and is not available to purchase from any other manufacturer.

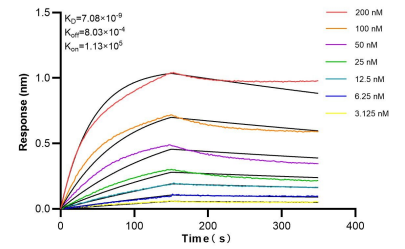
Selected Validation Data



Various lysates were subjected to SDS PAGE followed by western blot with 87979-1-RR (MTA1 antibody) at dilution of 1:5000 incubated at room temperature for 1.5 hours.



Immunofluorescent analysis of (4% PFA) fixed HeLa cells using MTA1 antibody (87979-1-RR, Clone: 253519C10) at dilution of 1:500 and CoraLite® 488-Conjugated Goat Anti-Rabbit IgG(H+L) (SA00013-2).



Biolayer interferometry (BLI) kinetic assays of 87979-1-RR against Human MTA1 were performed. The affinity constant is 7.08 nM.