

For Research Use Only

Ephrin B2 Recombinant monoclonal antibody

Catalog Number:87995-1-RR



Basic Information

Catalog Number: 87995-1-RR	GenBank Accession Number: BC074856	Purification Method: Protein A purification
Size: 100ul , Concentration: 1000 µg/ml by Nanodrop;	GeneID (NCBI): 1948	CloneNo.: 253599B5
Source: Rabbit	UNIPROT ID: P52799	Recommended Dilutions: WB: 1:2000-1:10000
Isotype: IgG	Full Name: ephrin-B2	
Immunogen Catalog Number: AG24865	Calculated MW: 333 aa, 37 kDa	
	Observed MW: 47-50 kDa	

Applications

Tested Applications: WB, ELISA	Positive Controls: WB : HeLa cells, HT-29 cells, NIH/3T3 cells, mouse spleen tissue, mouse placenta tissue
Species Specificity: human, mouse	

Background Information

Ephrin B2 (EFNB2) is a transmembrane ligand for the Ephrin B class (EPHB) of receptor tyrosine kinases. EPHB receptor(EPHB1-EPHB4, EPH6) are located at the member of one cell and activated by binding EFNB protein located on another cell, resulting in a bidirectional Ephrin-EphR signaling (PMID: 26790531). Ephrin-B are involved in vasculogenesis, neural development and synaptic plasticity, and in pathological processes such as cancer or neurodegeneration (PMID:29508392). The calculated molecular weight of EFNB2 is 37 kDa, and there is also detected about 50 kDa band in the article (PMID: 27650867, PMID: 23492730).

Storage

Storage:
Store at -20°C. Stable for one year after shipment.
Storage Buffer:
PBS with 0.02% sodium azide and 50% glycerol, pH7.3
Aliquoting is unnecessary for -20°C storage

*** 20ul sizes contain 0.1% BSA

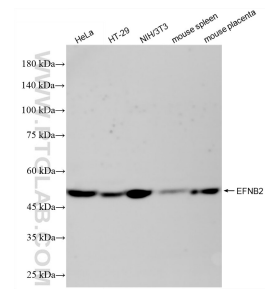
For technical support and original validation data for this product please contact:

T: 1 (888) 4PTGLAB (1-888-478-4522) (toll free in USA), or 1(312) 455-8498 (outside USA)

E: proteintech@ptglab.com
W: ptglab.com

This product is exclusively available under Proteintech Group brand and is not available to purchase from any other manufacturer.

Selected Validation Data



Various lysates were subjected to SDS PAGE followed by western blot with 87995-1-RR (EFNB2 antibody) at dilution of 1:5000 incubated at room temperature for 1.5 hours.