

For Research Use Only

# FGRL1 Recombinant monoclonal antibody

Catalog Number: 88000-1-RR



## Basic Information

<b>Catalog Number:</b> 88000-1-RR	<b>GenBank Accession Number:</b> NM_001425814.1	<b>Purification Method:</b> Protein A purification
<b>Size:</b> 100ul , Concentration: 1000 µg/ml by Nanodrop;	<b>GeneID (NCBI):</b> 116701	<b>CloneNo.:</b> 260184E1
<b>Source:</b> Rabbit	<b>UNIPROT ID:</b> Q91V87-1	<b>Recommended Dilutions:</b> WB: 1:5000-1:50000
<b>Isotype:</b> IgG	<b>Full Name:</b> fibroblast growth factor receptor-like 1	
<b>Immunogen Catalog Number:</b> EG9200	<b>Calculated MW:</b> 57 kDa	
	<b>Observed MW:</b> 50 kDa, 60 kDa	

## Applications

### Tested Applications:

WB, ELISA

### Species Specificity:

mouse, rat

### Positive Controls:

WB: mouse lung tissue, mouse kidney tissue, mouse liver tissue, rat liver tissue

## Background Information

FGR-like 1 (FGRL1) is a poorly characterized protein-coding gene in mice, annotated based on sequence similarity to members of the Src family kinase-related proteins, particularly FGR, although it is not confirmed to possess canonical kinase activity. Current data suggest that Fgrl1 expression is low and tissue-restricted, with detectable transcripts reported in immune-related tissues and select epithelial compartments, but without a clearly defined cellular distribution.

## Storage

### Storage:

Store at -20°C. Stable for one year after shipment.

### Storage Buffer:

PBS with 0.02% sodium azide and 50% glycerol, pH7.3

Aliquoting is unnecessary for -20°C storage

\*\*\* 20ul sizes contain 0.1% BSA

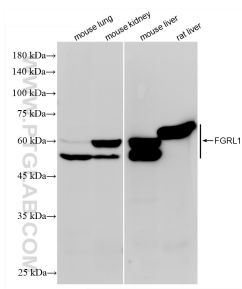
For technical support and original validation data for this product please contact:

T: 1 (888) 4PTGLAB (1-888-478-4522) (toll free in USA), or 1(312) 455-8498 (outside USA)

E: [proteintech@ptglab.com](mailto:proteintech@ptglab.com)  
W: [ptglab.com](http://ptglab.com)

This product is exclusively available under Proteintech Group brand and is not available to purchase from any other manufacturer.

## Selected Validation Data



Various lysates were subjected to SDS PAGE followed by western blot with 88000-1-RR (FGRL1 antibody) at dilution of 1:10000 incubated at room temperature for 1.5 hours.