

For Research Use Only

# ERG Recombinant monoclonal antibody, PBS Only

Catalog Number: 88009-1-PBS



## Basic Information

<b>Catalog Number:</b> 88009-1-PBS	<b>GenBank Accession Number:</b> BC040168	<b>Purification Method:</b> Protein A purification
<b>Size:</b> 100ug , Concentration: 1 mg/ml by Nanodrop;	<b>GeneID (NCBI):</b> 2078	<b>CloneNo.:</b> 253522H8
<b>Source:</b> Rabbit	<b>UNIPROT ID:</b> P11308	
<b>Isotype:</b> IgG	<b>Full Name:</b> v-ets erythroblastosis virus E26 oncogene homolog (avian)	
<b>Immunogen Catalog Number:</b> AG5708	<b>Calculated MW:</b> 55 kDa	
	<b>Observed MW:</b> 55 kDa	

## Applications

**Tested Applications:**  
WB, IF/ICC, Indirect ELISA

**Species Specificity:**  
human, mouse

## Background Information

ERG (ETS-related gene) is a member of the ETS family of transcription factors, which are downstream effectors of mitogenic signaling transduction pathway. ERG is a key regulator of cell proliferation, differentiation, angiogenesis, inflammation, and apoptosis. ERG is involved in chromosomal translocations, resulting in different fusion gene products, such as TMPSSR2-ERG and NDRG1-ERG in prostate cancer, EWS-ERG in Ewing's sarcoma and FUS-ERG in acute myeloid leukemia.

## Storage

**Storage:**  
Store at -80°C.

**Storage Buffer:**  
PBS only, pH7.3

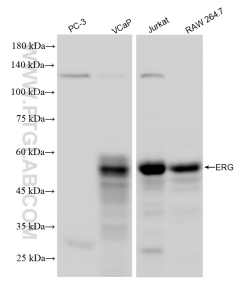
For technical support and original validation data for this product please contact:

T: 1 (888) 4PTGLAB (1-888-478-4522) (toll free  
in USA), or 1(312) 455-8498 (outside USA)

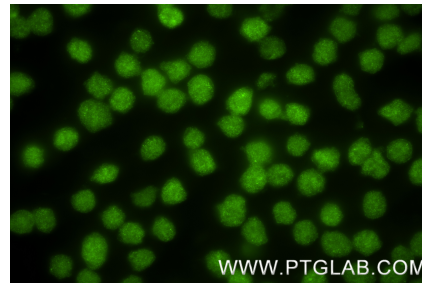
E: [proteintech@ptglab.com](mailto:proteintech@ptglab.com)  
W: [ptglab.com](http://ptglab.com)

**This product is exclusively available under Proteintech Group brand and is not available to purchase from any other manufacturer.**

## Selected Validation Data



Various lysates were subjected to SDS PAGE followed by western blot with 88009-1-RR (ERG antibody) at dilution of 1:10000 incubated at room temperature for 1.5 hours. This data was developed using the same antibody clone with 88009-1-PBS in a different storage buffer formulation.



Immunofluorescent analysis of (4% PFA) fixed MOLT-4 cells using ERG antibody (88009-1-RR, Clone: 253522H8) at dilution of 1:400 and CoraLite® 488-Conjugated Goat Anti-Rabbit IgG(H+L) (SA00013-2). This data was developed using the same antibody clone with 88009-1-PBS in a different storage buffer formulation.