

For Research Use Only

ERG Recombinant monoclonal antibody

Catalog Number:88009-1-RR



Basic Information

Catalog Number: 88009-1-RR	GenBank Accession Number: BC040168	Purification Method: Protein A purification
Size: 100ul , Concentration: 1000 µg/ml by Nanodrop;	GeneID (NCBI): 2078	CloneNo.: 253522H8
Source: Rabbit	UNIPROT ID: P11308	Recommended Dilutions: WB: 1:5000-1:50000 IF/ICC: 1:200-1:800
Isotype: IgG	Full Name: v-ets erythroblastosis virus E26 oncogene homolog (avian)	
Immunogen Catalog Number: AG5708	Calculated MW: 55 kDa	
	Observed MW: 55 kDa	

Applications

Tested Applications: WB, ELISA	Positive Controls: WB : VCaP cells, Jurkat cells, RAW 264.7 cells IF/ICC : MOLT-4 cells,
Species Specificity: human, mouse	

Background Information

ERG (ETS-related gene) is a member of the ETS family of transcription factors, which are downstream effectors of mitogenic signaling transduction pathway. ERG is a key regulator of cell proliferation, differentiation, angiogenesis, inflammation, and apoptosis. ERG is involved in chromosomal translocations, resulting in different fusion gene products, such as TMPSSR2-ERG and NDRG1-ERG in prostate cancer, EWS-ERG in Ewing's sarcoma and FUS-ERG in acute myeloid leukemia.

Storage

Storage:
Store at -20°C. Stable for one year after shipment.
Storage Buffer:
PBS with 0.02% sodium azide and 50% glycerol, pH7.3
Aliquoting is unnecessary for -20°C storage

*** 20ul sizes contain 0.1% BSA

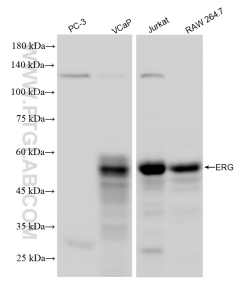
For technical support and original validation data for this product please contact:

T: 1 (888) 4PTGLAB (1-888-478-4522) (toll free in USA), or 1(312) 455-8498 (outside USA)

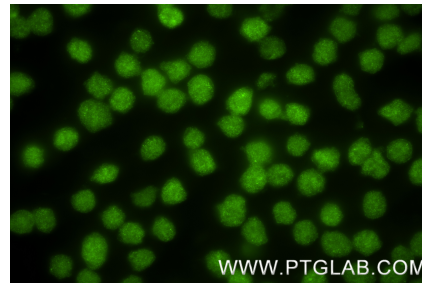
E: proteintech@ptglab.com
W: ptglab.com

This product is exclusively available under Proteintech Group brand and is not available to purchase from any other manufacturer.

Selected Validation Data



Various lysates were subjected to SDS PAGE followed by western blot with 88009-1-RR (ERG antibody) at dilution of 1:10000 incubated at room temperature for 1.5 hours.



Immunofluorescent analysis of (4% PFA) fixed MOLT-4 cells using ERG antibody (88009-1-RR, Clone: 253522H8) at dilution of 1:400 and CoraLite® 488-Conjugated Goat Anti-Rabbit IgG(H+L) (SA00013-2).