

For Research Use Only

# RPN2 Recombinant monoclonal antibody

Catalog Number:88014-2-RR



## Basic Information

<b>Catalog Number:</b> 88014-2-RR	<b>GenBank Accession Number:</b> BC003560	<b>Purification Method:</b> Protein A purification
<b>Size:</b> 100ul , Concentration: 1000 µg/ml by Nanodrop;	<b>GeneID (NCBI):</b> 6185	<b>CloneNo.:</b> 260152B6
<b>Source:</b> Rabbit	<b>UNIPROT ID:</b> P04844	<b>Recommended Dilutions:</b> WB: 1:2000-1:10000
<b>Isotype:</b> IgG	<b>Full Name:</b> ribophorin II	
<b>Immunogen Catalog Number:</b> AG40161	<b>Calculated MW:</b> 69 kDa	
	<b>Observed MW:</b> 68-69 kDa	

## Applications

**Tested Applications:**  
WB, ELISA

**Species Specificity:**  
human, mouse, rat

### Positive Controls:

WB : HepG2 cells, SK-BR-3 cells, Caco-2 cells, Calu-3 cells, BxPC-3 cells, NIH/3T3 cells, HSC-T6 cells

## Background Information

RPN2 (Ribophorin II), an integral rough ER membrane glycoprotein, is part of an N-oligosaccharyl transferase complex and is involved in translocation and the maintenance of the structural uniqueness of the rough ER. RPN2 expression has been reported to be significantly associated with solid cancers, including breast cancer, esophageal squamous cell carcinoma, colorectal cancer, and lung squamous cell carcinoma.

## Storage

**Storage:**  
Store at -20°C. Stable for one year after shipment.

**Storage Buffer:**  
PBS with 0.02% sodium azide and 50% glycerol, pH7.3

Aliquoting is unnecessary for -20°C storage

\*\*\* 20ul sizes contain 0.1% BSA

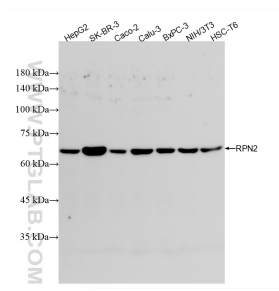
For technical support and original validation data for this product please contact:

T: 1 (888) 4PTGLAB (1-888-478-4522) (toll free in USA), or 1(312) 455-8498 (outside USA)

E: [proteintech@ptglab.com](mailto:proteintech@ptglab.com)  
W: [ptglab.com](http://ptglab.com)

This product is exclusively available under Proteintech Group brand and is not available to purchase from any other manufacturer.

## Selected Validation Data



Various lysates were subjected to SDS PAGE followed by western blot with 88014-2-RR (RPN2 antibody) at dilution of 1:5000 incubated at room temperature for 1.5 hours.