

For Research Use Only

Mouse RAMP2 Recombinant monoclonal antibody, PBS Only (Capture)

Catalog Number: 88020-1-PBS



Basic Information

Catalog Number: 88020-1-PBS	GenBank Accession Number: NM_019444.2	Purification Method: Protein A purification
Size: 100ug , Concentration: 1 mg/ml by Nanodrop;	GeneID (NCBI): 54409	CloneNo.: 260084F11
Source: Rabbit	UNIPROT ID: Q9WUPO	
Isotype: IgG	Full Name: receptor (calcitonin) activity modifying protein 2	
Immunogen Catalog Number: EG9065	Calculated MW: 21 kDa	

Applications

Tested Applications:
Cytometric bead array, Indirect ELISA

Species Specificity:
mouse

Product Information

88020-1-PBS targets RAMP2 as part of a matched antibody pair:

MP03316-1: 88020-1-PBS capture and 88020-3-PBS detection (validated in Cytometric bead array)

Unconjugated rabbit recombinant monoclonal antibody in PBS only (BSA and azide free) storage buffer at a concentration of 1 mg/mL, ready for conjugation. Created using Proteintech's proprietary in-house recombinant technology. Recombinant production enables unrivalled batch-to-batch consistency, easy scale-up, and future security of supply.

This conjugation ready format makes antibodies ideal for use in many applications including: ELISAs, multiplex assays requiring matched pairs, mass cytometry, and multiplex imaging applications. Antibody use should be optimized by the end user for each application and assay.

Storage

Storage:
Store at -80°C.

Storage Buffer:
PBS only, pH7.3

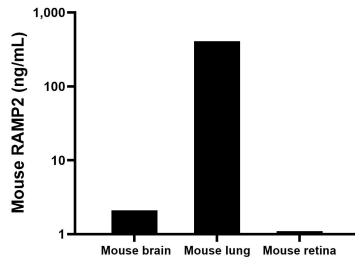
For technical support and original validation data for this product please contact:

T: 1 (888) 4PTGLAB (1-888-478-4522) (toll free in USA), or 1(312) 455-8498 (outside USA)

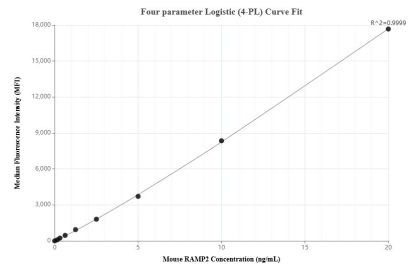
E: proteintech@ptglab.com
W: ptglab.com

This product is exclusively available under Proteintech Group brand and is not available to purchase from any other manufacturer.

Selected Validation Data



The mean RAMP2 concentration was determined to be 2.1 ng/mL in mouse brain tissue extract based on a 1.0 mg/mL extract load, 408.1 ng/mL in mouse lung tissue extract based on a 1.0 mg/mL extract load, 1.1 ng/mL in mouse retina tissue extract based on a 1.0 mg/mL extract load.



Cytometric bead array standard curve of MP03316-1, MOUSE RAMP2 Recombinant Matched Antibody Pair, PBS Only. Capture antibody: 88020-1-PBS. Detection antibody: 88020-3-PBS. Standard: Eg9065. Range: 0.156-20 ng/mL.