

For Research Use Only

Epha4 Recombinant monoclonal antibody

Catalog Number:88021-1-RR



Basic Information

Catalog Number: 88021-1-RR	GenBank Accession Number: NM_007936.3	Purification Method: Protein A purification
Size: 100ul , Concentration: 1000 µg/ml by Nanodrop;	GeneID (NCBI): 13838	CloneNo.: 260150A12
Source: Rabbit	UNIPROT ID: Q03137-1	Recommended Dilutions: WB: 1:500-1:2000
Isotype: IgG	Full Name: Eph receptor A4	
Immunogen Catalog Number: EG8776	Calculated MW: 110 kDa	
	Observed MW: 120 kDa	

Applications

Tested Applications: WB, ELISA	Positive Controls: WB : mouse brain tissue, rat brain tissue
Species Specificity: mouse, rat	

Background Information

EPH receptor A4 (EPHA4) is a member of the Eph receptor family of receptor tyrosine kinases (RTKs) that interacts with both ephrin-A and ephrin-B ligands, making it one of the most versatile Eph receptors. In mice, Epha4 is highly expressed in the central nervous system, particularly during development, where it regulates axon guidance, neuronal pathfinding, synaptic plasticity, and neural circuit formation. EPHA4 mediates contact-dependent bidirectional signaling, often inducing cell repulsion and boundary formation, which is critical for proper tissue patterning. Beyond development, EPHA4 continues to function in the adult CNS, contributing to synaptic remodeling and neuronal regeneration responses.

Storage

Storage:
Store at -20°C. Stable for one year after shipment.
Storage Buffer:
PBS with 0.02% sodium azide and 50% glycerol, pH7.3
Aliquoting is unnecessary for -20°C storage

*** 20ul sizes contain 0.1% BSA

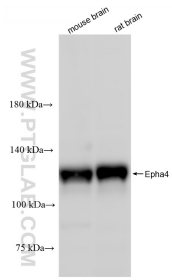
For technical support and original validation data for this product please contact:

T: 1 (888) 4PTGLAB (1-888-478-4522) (toll free
in USA), or 1(312) 455-8498 (outside USA)

E: proteintech@ptglab.com
W: ptglab.com

This product is exclusively available under Proteintech Group brand and is not available to purchase from any other manufacturer.

Selected Validation Data



Various lysates were subjected to SDS PAGE followed by western blot with 88021-1-RR (Epha4 antibody) at dilution of 1:1000 incubated at room temperature for 1.5 hours.