

For Research Use Only

# PRKACA Recombinant monoclonal antibody, PBS Only (Detector)

Catalog Number:88029-2-PBS



## Basic Information

|   |   |   |
|---|---|---|
| <b>Catalog Number:</b><br>88029-2-PBS                       | <b>GenBank Accession Number:</b><br>BC039846                          | <b>Purification Method:</b><br>Protein A purification |
| <b>Size:</b><br>100ug , Concentration: 1 mg/ml by Nanodrop; | <b>GeneID (NCBI):</b><br>5566   | <b>CloneNo.:</b><br>260253F1                          |
| <b>Source:</b><br>Rabbit                                    | <b>UNIPROT ID:</b><br>P17612  |   |
| <b>Isotype:</b><br>IgG                                      | <b>Full Name:</b><br>protein kinase, cAMP-dependent, catalytic, alpha |   |
| <b>Immunogen Catalog Number:</b><br>AG26392                 | <b>Calculated MW:</b><br>41 kDa                                       |   |

## Applications

**Tested Applications:**  
Cytometric bead array, Indirect ELISA

**Species Specificity:**  
human

## Product Information

88029-2-PBS targets PRKACA as part of a matched antibody pair:

MP03319-1: 88029-3-PBS capture and 88029-2-PBS detection (validated in Cytometric bead array)

Unconjugated rabbit recombinant monoclonal antibody in PBS only (BSA and azide free) storage buffer at a concentration of 1 mg/mL, ready for conjugation. Created using Proteintech's proprietary in-house recombinant technology. Recombinant production enables unrivalled batch-to-batch consistency, easy scale-up, and future security of supply.

This conjugation ready format makes antibodies ideal for use in many applications including: ELISAs, multiplex assays requiring matched pairs, mass cytometry, and multiplex imaging applications. Antibody use should be optimized by the end user for each application and assay.

## Storage

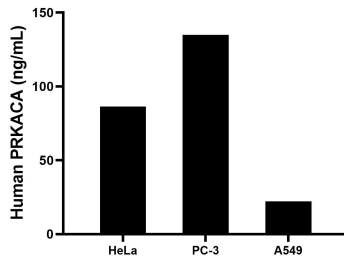
**Storage:**  
Store at -80°C.

**Storage Buffer:**  
PBS only, pH7.3

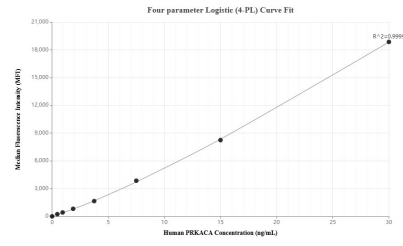
For technical support and original validation data for this product please contact:  
T: 1 (888) 4PTGLAB (1-888-478-4522) (toll free in USA), or 1(312) 455-8498 (outside USA)      E: proteintech@ptglab.com  
W: ptglab.com

**This product is exclusively available under Proteintech Group brand and is not available to purchase from any other manufacturer.**

## Selected Validation Data



The mean TRIP4 concentration was determined to be 86.3 ng/mL in HeLa cell extract based on a 1.2 mg/mL extract load, 134.9 ng/mL in PC-3 cell extract based on a 1.2 mg/mL extract load, 22.2 ng/mL in A549 cell extract based on a 1.2 mg/mL extract load.



Cytometric bead array standard curve of MP03319-1, PRKACA Recombinant Matched Antibody Pair, PBS Only. Capture antibody: 88029-3-PBS. Detection antibody: 88029-2-PBS. Standard: Ag26392. Range: 0.469-30 ng/mL