

For Research Use Only

# MITD1 Recombinant monoclonal antibody

Catalog Number: 88031-1-RR



## Basic Information

<b>Catalog Number:</b> 88031-1-RR	<b>GenBank Accession Number:</b> BC018453	<b>Purification Method:</b> Protein A purification
<b>Size:</b> 100ul , Concentration: 1000 µg/ml by Nanodrop;	<b>GeneID (NCBI):</b> 129531	<b>CloneNo.:</b> 260134F6
<b>Source:</b> Rabbit	<b>UNIPROT ID:</b> Q8WV92	<b>Recommended Dilutions:</b> WB: 1:5000-1:50000
<b>Isotype:</b> IgG	<b>Full Name:</b> MIT, microtubule interacting and transport, domain containing 1	
<b>Immunogen Catalog Number:</b> AG10998	<b>Calculated MW:</b> 249 aa, 29 kDa	
	<b>Observed MW:</b> 29 kDa	

## Applications

**Tested Applications:**  
WB, ELISA

**Species Specificity:**  
human, mouse, rat

**Positive Controls:**  
WB : HeLa cells, HepG2 cells, Jurkat cells, MOLT-4 cells, U2OS cells, NIH/3T3 cells, HSC-T6 cells

## Background Information

MITD1 (Microtubule Interacting and Trafficking Domain Containing 1) has a molecular weight of approximately 29.3 kDa and consists of 249 amino acids. Functionally, MITD1 regulates ESCRT-III activity and is required for efficient abscission at the end of cytokinesis. It functions as a homodimer, with its N-terminal MIT domain binding to a subset of ESCRT-III subunits and its C-terminal unanticipated phospholipase D-like (PLD) domain binding to membranes. Depletion of MITD1 causes cytokinetic defects, including midbody destabilization and abscission failure. Beyond its role in cell division, MITD1 has recently been identified as a brain-specific interferon-inducible factor that inhibits flavivirus replication.

## Storage

**Storage:**  
Store at -20°C. Stable for one year after shipment.

**Storage Buffer:**  
PBS with 0.02% sodium azide and 50% glycerol, pH7.3

Aliquoting is unnecessary for -20°C storage

\*\*\* 20ul sizes contain 0.1% BSA

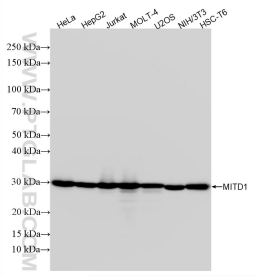
For technical support and original validation data for this product please contact:

T: 1 (888) 4PTGLAB (1-888-478-4522) (toll free in USA), or 1(312) 455-8498 (outside USA)

E: [proteintech@ptglab.com](mailto:proteintech@ptglab.com)  
W: [ptglab.com](http://ptglab.com)

This product is exclusively available under Proteintech Group brand and is not available to purchase from any other manufacturer.

## Selected Validation Data



Various lysates were subjected to SDS PAGE followed by western blot with 88031-1-RR (MITD1 antibody) at dilution of 1:10000 incubated at room temperature for 1.5 hours.