

For Research Use Only

RNF41 Recombinant monoclonal antibody, PBS Only (Detector)

Catalog Number: 88043-2-PBS



Basic Information

Catalog Number: 88043-2-PBS	GenBank Accession Number: BC032637	Purification Method: Protein A purification
Size: 100ug , Concentration: 1 mg/ml by Nanodrop;	GeneID (NCBI): 10193	CloneNo.: 253576C6
Source: Rabbit	UNIPROT ID: Q9H4P4	
Isotype: IgG	Full Name: ring finger protein 41	
Immunogen Catalog Number: AG11076	Calculated MW: 317 aa, 36 kDa	

Applications

Tested Applications:
Cytometric bead array, Indirect ELISA

Species Specificity:
human

Product Information

88043-2-PBS targets RNF41 as part of a matched antibody pair.

MP03321-1: 88043-3-PBS capture and 88043-2-PBS detection (validated in Cytometric bead array)

Unconjugated rabbit recombinant monoclonal antibody in PBS only (BSA and azide free) storage buffer at a concentration of 1 mg/mL, ready for conjugation. Created using Proteintech's proprietary in-house recombinant technology. Recombinant production enables unrivalled batch-to-batch consistency, easy scale-up, and future security of supply.

This conjugation ready format makes antibodies ideal for use in many applications including: ELISAs, multiplex assays requiring matched pairs, mass cytometry, and multiplex imaging applications. Antibody use should be optimized by the end user for each application and assay.

Storage

Storage:
Store at -80°C.

Storage Buffer:
PBS only, pH7.3

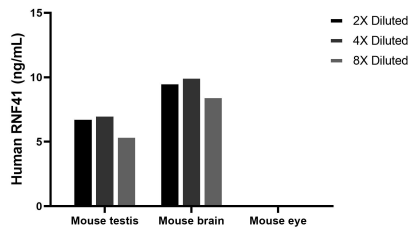
For technical support and original validation data for this product please contact:

T: 1 (888) 4PTGLAB (1-888-478-4522) (toll free in USA), or 1(312) 455-8498 (outside USA)

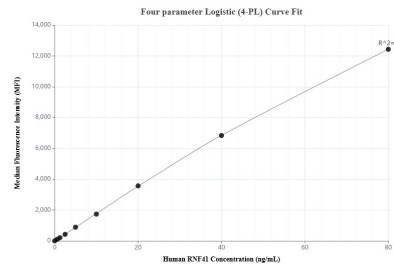
E: proteintech@ptglab.com
W: ptglab.com

This product is exclusively available under Proteintech Group brand and is not available to purchase from any other manufacturer.

Selected Validation Data



The mean RNF41 concentration was determined to be 6.5 ng/mL in mouse testis tissue extract based on a 4.2 mg/mL extract load, 9.4 ng/mL in mouse brain tissue extract based on a 6.3 mg/mL extract load, mouse eye tissue extract were served as a negative control.



Cytometric bead array standard curve of MP03321-1, RNF41 Recombinant Matched Antibody Pair, PBS Only. Capture antibody: 88043-3-PBS. Detection antibody: 88043-2-PBS. Standard: Ag11076. Range: 0.625-80 ng/mL.