

For Research Use Only

# Mouse Prom1 Recombinant monoclonal antibody, PBS Only (Capture)

Catalog Number: 88061-3-PBS



## Basic Information

<b>Catalog Number:</b> 88061-3-PBS	<b>GenBank Accession Number:</b> BC028286	<b>Purification Method:</b> Protein A purification
<b>Size:</b> 100ug, Concentration: 1 mg/ml by Nanodrop;	<b>GeneID (NCBI):</b> 19126	<b>CloneNo.:</b> 253117B5
<b>Source:</b> Rabbit	<b>UNIPROT ID:</b> O54990	
<b>Isotype:</b> IgG	<b>Full Name:</b> prominin 1	

## Applications

**Tested Applications:**  
Sandwich ELISA, Indirect ELISA

**Species Specificity:**  
mouse

## Product Information

88061-3-PBS targets Prom1 as part of a matched antibody pair:

MP03469-1: 88061-3-PBS capture and 88061-2-PBS detection (validated in Sandwich ELISA)

Unconjugated rabbit recombinant monoclonal antibody in PBS only (BSA and azide free) storage buffer at a concentration of 1 mg/mL, ready for conjugation. Created using Proteintech's proprietary in-house recombinant technology. Recombinant production enables unrivalled batch-to-batch consistency, easy scale-up, and future security of supply.

This conjugation ready format makes antibodies ideal for use in many applications including: ELISAs, multiplex assays requiring matched pairs, mass cytometry, and multiplex imaging applications. Antibody use should be optimized by the end user for each application and assay.

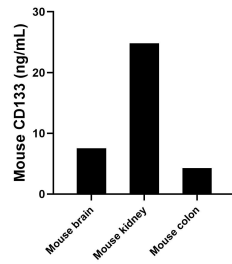
## Storage

**Storage:**  
Store at -80°C.  
**Storage Buffer:**  
PBS only, pH7.3

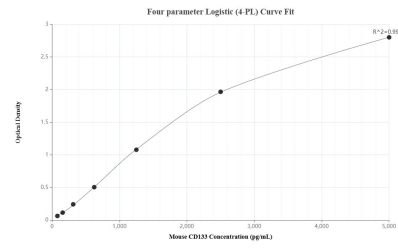
For technical support and original validation data for this product please contact:  
T: 1 (888) 4PTGLAB (1-888-478-4522) (toll free in USA), or 1(312) 455-8498 (outside USA)      E: proteintech@ptglab.com  
W: ptglab.com

**This product is exclusively available under Proteintech Group brand and is not available to purchase from any other manufacturer.**

## Selected Validation Data



The mean CD133 concentration was determined to be 7.55 ng/mL in mouse brain tissue extract based on a 6.3 mg/mL extract load, 24.81 ng/mL in mouse kidney tissue extract based on a 8.5 mg/mL extract load and 4.29 ng/mL in mouse colon tissue extract based on a 4.9 mg/mL extract load.



Sandwich ELISA standard curve of MP03469-1, Mouse CD133 Recombinant Matched Antibody Pair - PBS only. 88061-3-PBS was coated to a plate as the capture antibody and incubated with serial dilutions of standard SY03044. 88061-2-PBS was HRP conjugated as the detection antibody. Range: 78.1-5000 pg/mL