

For Research Use Only

# HHLA2 Recombinant monoclonal antibody, PBS Only (Detector)

Catalog Number: 88064-2-PBS



## Basic Information

|   |   |   |
|---|---|---|
| <b>Catalog Number:</b><br>88064-2-PBS                       | <b>GenBank Accession Number:</b><br>NM_007072 | <b>Purification Method:</b><br>Protein A purification |
| <b>Size:</b><br>100ug , Concentration: 1 mg/ml by Nanodrop; | <b>GeneID (NCBI):</b><br>11148                | <b>CloneNo.:</b><br>260180E1                          |
| <b>Source:</b><br>Rabbit                                    | <b>UNIPROT ID:</b><br>Q9UM44-1                |   |
| <b>Isotype:</b><br>IgG                                      | <b>Full Name:</b><br>HERV-H LTR-associating 2 |   |
| <b>Immunogen Catalog Number:</b><br>EG5055                  | <b>Calculated MW:</b><br>414 aa, 47 kDa       |   |

## Applications

**Tested Applications:**  
Cytometric bead array, Sandwich ELISA, Indirect ELISA

**Species Specificity:**  
human

## Product Information

88064-2-PBS targets HHLA2 as part of a matched antibody pair:

MP03313-1: 88064-3-PBS capture and 88064-2-PBS detection (validated in Cytometric bead array)

MP03313-2: 88064-4-PBS capture and 88064-2-PBS detection (validated in Sandwich ELISA)

Unconjugated rabbit recombinant monoclonal antibody in PBS only (BSA and azide free) storage buffer at a concentration of 1 mg/mL, ready for conjugation. Created using Proteintech's proprietary in-house recombinant technology. Recombinant production enables unrivalled batch-to-batch consistency, easy scale-up, and future security of supply.

This conjugation ready format makes antibodies ideal for use in many applications including: ELISAs, multiplex assays requiring matched pairs, mass cytometry, and multiplex imaging applications. Antibody use should be optimized by the end user for each application and assay.

## Storage

**Storage:**  
Store at -80°C.  
**Storage Buffer:**  
PBS only, pH7.3

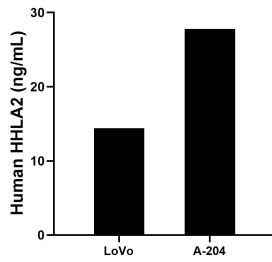
For technical support and original validation data for this product please contact:

T: 1 (888) 4PTGLAB (1-888-478-4522) (toll free in USA), or 1(312) 455-8498 (outside USA)

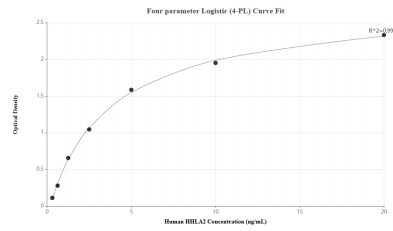
E: [proteintech@ptglab.com](mailto:proteintech@ptglab.com)  
W: [ptglab.com](http://ptglab.com)

**This product is exclusively available under Proteintech Group brand and is not available to purchase from any other manufacturer.**

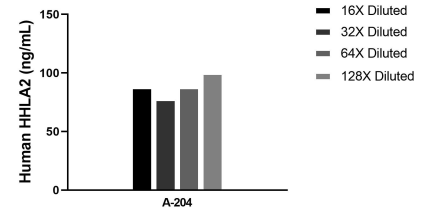
## Selected Validation Data



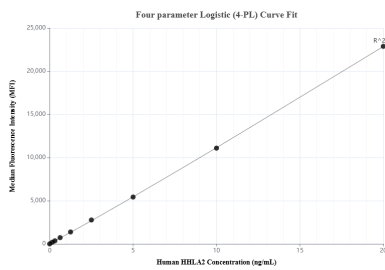
The mean HHLA2 concentration was determined to be 14.39 ng/mL in LoVo cell extract based on a 1.5 mg/mL extract load and 27.76 ng/mL in A-204 cell extract based on a 1.2 mg/mL extract load.



Sandwich ELISA standard curve of MP03313-2, Human HHLA2 Recombinant Matched Antibody Pair - PBS only. 88064-4-PBS was coated to a plate as the capture antibody and incubated with serial dilutions of standard Eg5055. 88064-2-PBS was HRP conjugated as the detection antibody. Range: 0.313-20 ng/mL



The mean HHLA2 concentration was determined to be 86.2 ng/mL in A-204 cell extract based on a 1.2 mg/mL extract load.



Cytometric bead array standard curve of MP03313-1, HHLA2 Recombinant Matched Antibody Pair, PBS Only. Capture antibody: 88064-3-PBS. Detection antibody: 88064-2-PBS. Standard: Eg5055. Range: 0.156-20 ng/mL