

For Research Use Only

# NPRL2,TUSC4 Recombinant monoclonal antibody, PBS Only

Catalog Number:88066-1-PBS



## Basic Information

Catalog Number:

88066-1-PBS

Size:

100ug, Concentration: 1 mg/ml by Nanodrop;

Source:

Rabbit

Isotype:

IgG

Immunogen Catalog Number:

AG38610

GenBank Accession Number:

BC002791

GeneID (NCBI):

10641

UNIPROT ID:

Q8WTW4

Full Name:

tumor suppressor candidate 4

Calculated MW:

44 kDa

Observed MW:

44 kDa

Purification Method:

Protein A purification

CloneNo.:

251619D5

## Applications

Tested Applications:

WB, Indirect ELISA

Species Specificity:

human, mouse, rat

## Background Information

NPRL2 (NPR2 Like, GATOR1 Complex Subunit) is a Protein Coding gene associated with Epilepsy, Familial Focal. As a component of the GATOR1 complex functions as an inhibitor of the amino acid-sensing branch of the TORC1 pathway. Homologous to yeast nitrogen permease (candidate tumor suppressor) (NM\_006545, BC021984) gene encodes a protein of molecular mass of 50 kDa. Data by using overlapping and nested homozygous deletions methods indicate that this protein might be a tumor suppressor involved in the development of lung cancers.

## Storage

Storage:

Store at -80°C.

Storage Buffer:

PBS only, pH7.3

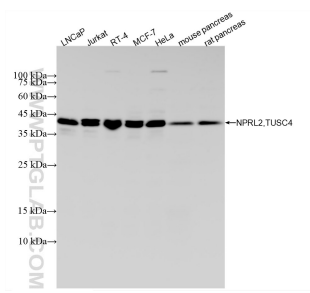
For technical support and original validation data for this product please contact:

T: 1 (888) 4PTGLAB (1-888-478-4522) (toll free in USA), or 1(312) 455-8498 (outside USA)

E: [proteintech@ptglab.com](mailto:proteintech@ptglab.com)  
W: [ptglab.com](http://ptglab.com)

This product is exclusively available under Proteintech Group brand and is not available to purchase from any other manufacturer.

## Selected Validation Data



Various lysates were subjected to SDS PAGE followed by western blot with 88066-1-RR (NPRL2, TUSC4 antibody) at dilution of 1:5000 incubated at room temperature for 1.5 hours. This data was developed using the same antibody clone with 88066-1-PBS in a different storage buffer formulation.