

For Research Use Only

CIDEB Recombinant monoclonal antibody

Catalog Number: 88087-1-RR



Basic Information

Catalog Number: 88087-1-RR	GenBank Accession Number: BC035970	Purification Method: Protein A purification
Size: 100ul , Concentration: 1000 µg/ml by Nanodrop;	GeneID (NCBI): 27141	CloneNo.: 260294B2
Source: Rabbit	UNIPROT ID: Q9UHD4	Recommended Dilutions: WB: 1:5000-1:50000
Isotype: IgG	Full Name: cell death-inducing DFFA-like effector b	
Immunogen Catalog Number: AG27003	Calculated MW: 219 aa, 28 kDa	
	Observed MW: 28 kDa	

Applications

Tested Applications: WB, ELISA	Positive Controls: WB : BxPC-3 cells, L02 cells, HuH-7 cells, HepG2 cells, RAW 264.7 cells, mouse liver tissue, rat liver tissue
Species Specificity: human, mouse, rat	

Background Information

Cell death-inducing DFFA-like effector B (CIDEB), an ER and lipid droplet (LD)-associated protein primarily expressed in the liver, participated in lipid metabolism by regulating lipid droplet fusion and VLDL lipitation. Although CIDEB is expressed at high levels in brown adipose tissue (BAT) and CIDEB is highly enriched in white adipose tissue (WAT) and BAT, CIDEB is more abundant in liver, kidney, small intestine, and colon. CIDEB is localized to endoplasmic reticulum and lipid droplets. (PMID: 30858281, PMID: 24831470, PMID: 19187774)

Storage

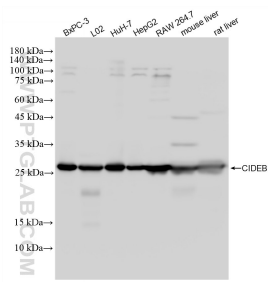
Storage:
Store at -20°C. Stable for one year after shipment.
Storage Buffer:
PBS with 0.02% sodium azide and 50% glycerol, pH7.3
Aliquoting is unnecessary for -20°C storage

*** 20ul sizes contain 0.1% BSA

For technical support and original validation data for this product please contact:
T: 1 (888) 4PTGLAB (1-888-478-4522) (toll free in USA), or 1(312) 455-8498 (outside USA)
E: proteintech@ptglab.com
W: ptglab.com

This product is exclusively available under Proteintech Group brand and is not available to purchase from any other manufacturer.

Selected Validation Data



Various lysates were subjected to SDS PAGE followed by western blot with 88087-1-RR (CIDEB antibody) at dilution of 1:10000 incubated at room temperature for 1.5 hours.