

For Research Use Only

GATD3 Recombinant monoclonal antibody

Catalog Number: 88088-1-RR



Basic Information

Catalog Number: 88088-1-RR	GenBank Accession Number: BC002370	Purification Method: Protein A purification
Size: 100ul , Concentration: 1000 µg/ml by Nanodrop;	GeneID (NCBI): 8209	CloneNo.: 260353D3
Source: Rabbit	UNIPROT ID: PODPI2	Recommended Dilutions: WB: 1:5000-1:50000
Isotype: IgG	Full Name: chromosome 21 open reading frame 33	
Immunogen Catalog Number: AG37527	Calculated MW: 268 aa, 28 kDa	
	Observed MW: 28 kDa	

Applications

Tested Applications:
WB, ELISA

Species Specificity:
human, mouse, rat

Positive Controls:

WB : HeLa cells, HepG2 cells, K-562 cells, THP-1 cells, A549 cells, mouse liver tissue, rat skeletal muscle tissue

Background Information

GATD3A is a member of glutamine amidotransferase-like class 1 domain-containing (GATD) family. GATD proteins classically generate ammonia by amidolysis from the glutamine amide nitrogen, transferring it to an acceptor substrate in a variety of anabolic reactions involving purine and pyrimidine synthesis (PMID: 9575335). GATD3A restricts the formation of AGEs in mitochondria and is a relevant target for diseases where AGE deposition is a pathological hallmark (PMID: 35307029).

Storage

Storage:
Store at -20°C. Stable for one year after shipment.

Storage Buffer:
PBS with 0.02% sodium azide and 50% glycerol, pH7.3

Aliquoting is unnecessary for -20°C storage

*** 20ul sizes contain 0.1% BSA

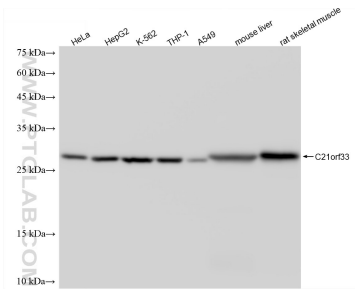
For technical support and original validation data for this product please contact:

T: 1 (888) 4PTGLAB (1-888-478-4522) (toll free in USA), or 1(312) 455-8498 (outside USA)

E: proteintech@ptglab.com
W: ptglab.com

This product is exclusively available under Proteintech Group brand and is not available to purchase from any other manufacturer.

Selected Validation Data



Various lysates were subjected to SDS PAGE followed by western blot with 88088-1-RR (C21orf33 antibody) at dilution of 1:10000 incubated at room temperature for 1.5 hours.