

For Research Use Only

PROK1 Recombinant monoclonal antibody, PBS Only (Detector)

Catalog Number: 88104-1-PBS



Basic Information

Catalog Number: 88104-1-PBS	GenBank Accession Number: BC025399	Purification Method: Protein A purification
Size: 100ug , Concentration: 1 mg/ml by Nanodrop;	GeneID (NCBI): 84432	CloneNo.: 260149G4
Source: Rabbit	UNIPROT ID: P58294	
Isotype: IgG	Full Name: prokineticin 1	
Immunogen Catalog Number: EG5356	Calculated MW: 12 kDa	

Applications

Tested Applications:
Sandwich ELISA, Indirect ELISA

Species Specificity:
human

Product Information

88104-1-PBS targets PROK1 as part of a matched antibody pair:

MP03323-1: 88104-2-PBS capture and 88104-1-PBS detection (validated in Sandwich ELISA)

Unconjugated rabbit recombinant monoclonal antibody in PBS only (BSA and azide free) storage buffer at a concentration of 1 mg/mL, ready for conjugation. Created using Proteintech's proprietary in-house recombinant technology. Recombinant production enables unrivalled batch-to-batch consistency, easy scale-up, and future security of supply.

This conjugation ready format makes antibodies ideal for use in many applications including: ELISAs, multiplex assays requiring matched pairs, mass cytometry, and multiplex imaging applications. Antibody use should be optimized by the end user for each application and assay.

Storage

Storage:
Store at -80°C.

Storage Buffer:
PBS only, pH7.3

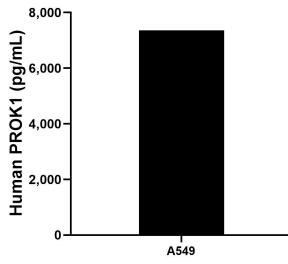
For technical support and original validation data for this product please contact:

T: 1 (888) 4PTGLAB (1-888-478-4522) (toll free in USA), or 1(312) 455-8498 (outside USA)

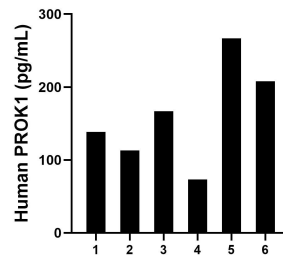
E: proteintech@ptglab.com
W: ptglab.com

This product is exclusively available under Proteintech Group brand and is not available to purchase from any other manufacturer.

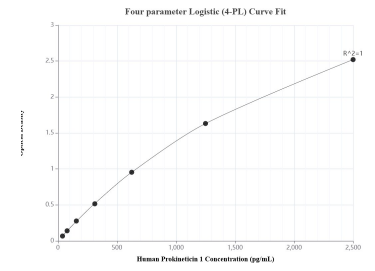
Selected Validation Data



The mean Prokineticin 1 concentration was determined to be 7,360.8 pg/mL in A549 cell extract based on a 1.2 mg/mL extract load.



Plasma of six individual healthy human donors was measured. The human Prokineticin 1 concentration of detected samples was determined to be 161.0 pg/mL with a range of 73.4-266.7 pg/mL.



Sandwich ELISA standard curve of MP03323-1, Human Prokineticin 1 Recombinant Matched Antibody Pair - PBS only. 88104-2-PBS was coated to a plate as the capture antibody and incubated with serial dilutions of standard Eg5356. 88104-1-PBS was HRP conjugated as the detection antibody. Range: 39.1-2500 pg/mL