

For Research Use Only

# IGF2BP1 Recombinant monoclonal antibody, PBS Only (Detector)

Catalog Number: 88123-1-PBS



## Basic Information

<b>Catalog Number:</b> 88123-1-PBS	<b>GenBank Accession Number:</b> BC156957	<b>Purification Method:</b> Protein A purification
<b>Size:</b> 100ug , Concentration: 1 mg/ml by Nanodrop;	<b>GeneID (NCBI):</b> 10642	<b>CloneNo.:</b> 260323A4
<b>Source:</b> Rabbit	<b>UNIPROT ID:</b> Q9NZI8	
<b>Isotype:</b> IgG	<b>Full Name:</b> insulin-like growth factor 2 mRNA binding protein 1	
<b>Immunogen Catalog Number:</b> AG18859	<b>Calculated MW:</b> 577 aa, 63 kDa	
	<b>Observed MW:</b> 63-70 kDa	

## Applications

**Tested Applications:**  
WB, Cytometric bead array, Indirect ELISA

**Species Specificity:**  
human, mouse

## Product Information

88123-1-PBS targets IGF2BP1 as part of a matched antibody pair:

MP03376-1: 88123-2-PBS capture and 88123-1-PBS detection (validated in Cytometric bead array)

Unconjugated rabbit recombinant monoclonal antibody in PBS only (BSA and azide free) storage buffer at a concentration of 1 mg/mL, ready for conjugation. Created using Proteintech's proprietary in-house recombinant technology. Recombinant production enables unrivalled batch-to-batch consistency, easy scale-up, and future security of supply.

This conjugation ready format makes antibodies ideal for use in many applications including: ELISAs, multiplex assays requiring matched pairs, mass cytometry, and multiplex imaging applications. Antibody use should be optimized by the end user for each application and assay.

## Background Information

IGF2BP1, also named as CRDBP, VICKZ1, ZBP1, is a 577 amino acid protein, which belongs to the RRM IMP/VICKZ family. IGF2BP1 can form homodimers and heterodimers with IGF2BP1 and IGF2BP3. IGF2BP1 is mainly expressed in the embryo, including in fetal liver, fetal lung, fetal kidney, fetal thymus and also expressed follicles of ovary, as well as in gonocytes of testis, spermatogonia, semen, oocytes and placenta. IGF2BP1 is Expressed in various cancers, including testis and lung cancers, as well as kidney, prostate and trachea cancers. IGF2BP1 as RNA-binding factor that recruits target transcripts to cytoplasmic protein-RNA complexes (mRNPs). It also modulates the rate and location at which target transcripts encounter the translational apparatus and shields them from endonuclease attacks or microRNA-mediated degradation. The calculated molecular weight of IGF2BP1 is 63 kDa, but modified IGF2BP1 is about 65-70 kDa.

## Storage

**Storage:**  
Store at -80°C.

**Storage Buffer:**  
PBS only, pH7.3

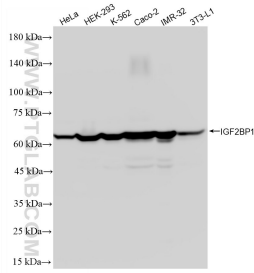
For technical support and original validation data for this product please contact:

T: 1 (888) 4PTGLAB (1-888-478-4522) (toll free in USA), or 1(312) 455-8498 (outside USA)

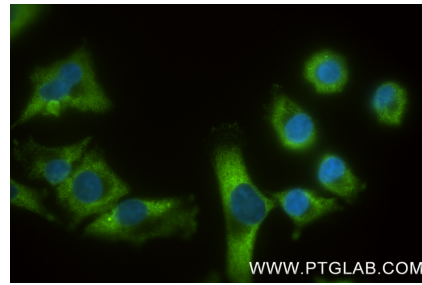
E: [proteintech@ptglab.com](mailto:proteintech@ptglab.com)  
W: [ptglab.com](http://ptglab.com)

**This product is exclusively available under Proteintech Group brand and is not available to purchase from any other manufacturer.**

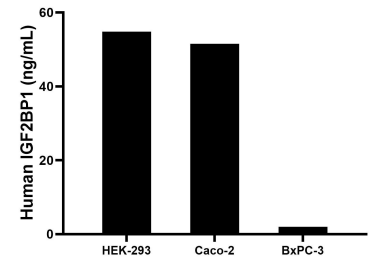
## Selected Validation Data



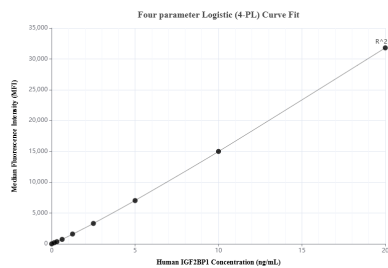
Various lysates were subjected to SDS PAGE followed by western blot with 88123-1-RR (IGF2BP1 antibody) at dilution of 1:10000 incubated at room temperature for 1.5 hours. This data was developed using the same antibody clone with 88123-1-PBS in a different storage buffer formulation.



Immunofluorescent analysis of (-20°C Ethanol) fixed A375 cells using IGF2BP1 antibody (88123-1-RR, Clone: 260323A4) at dilution of 1:400 and CoraLite® 488-Conjugated Goat Anti-Rabbit IgG(H+L) (SA00013-2). This data was developed using the same antibody clone with 88123-1-PBS in a different storage buffer formulation.



The mean IGF2BP1 concentration was determined to be 54.8 ng/mL in HEK-293 cell extract based on a 1.0 mg/mL extract load, 51.5 ng/mL in Caco-2 cell extract based on a 1.0 mg/mL extract load, 2.0 ng/mL in BxPC-3 cell extract based on a 1.0 mg/mL extract load.



Cytometric bead array standard curve of MP03376-1, IGF2BP1 Recombinant Matched Antibody Pair, PBS Only. Capture antibody: 88123-2-PBS. Detection antibody: 88123-1-PBS. Standard: Ag18859. Range: 0.156-20 ng/mL.