

For Research Use Only

IGF2BP1 Recombinant monoclonal antibody

Catalog Number: 88123-1-RR



Basic Information

Catalog Number: 88123-1-RR	GenBank Accession Number: BC156957	Purification Method: Protein A purification
Size: 100ul , Concentration: 1000 µg/ml by Nanodrop;	GeneID (NCBI): 10642	CloneNo.: 260323A4
Source: Rabbit	UNIPROT ID: Q9NZI8	Recommended Dilutions: WB: 1:5000-1:50000 IF/ICC: 1:200-1:800
Isotype: IgG	Full Name: insulin-like growth factor 2 mRNA binding protein 1	
Immunogen Catalog Number: AG18859	Calculated MW: 577 aa, 63 kDa	
	Observed MW: 63-70 kDa	

Applications

Tested Applications: WB, ELISA	Positive Controls:
Species Specificity: human, mouse	WB : HeLa cells, HEK-293 cells, K-562 cells, Caco-2 cells, IMR-32 cells, 3T3-L1 cells
	IF/ICC : A375 cells,

Background Information

IGF2BP1, also named as CRDBP, VICKZ1, ZBP1, is a 577 amino acid protein, which belongs to the RRM IMP/VICKZ family. IGF2BP1 can form homodimers and heterodimers with IGF2BP1 and IGF2BP3. IGF2BP1 is mainly expressed in the embryo, including in fetal liver, fetal lung, fetal kidney, fetal thymus and also expressed follicles of ovary, as well as in gonocytes of testis, spermatogonia, semen, oocytes and placenta. IGF2BP1 is Expressed in various cancers, including testis and lung cancers, as well as kidney, prostate and trachea cancers. IGF2BP1 as RNA-binding factor that recruits target transcripts to cytoplasmic protein-RNA complexes (mRNPs). It also modulates the rate and location at which target transcripts encounter the translational apparatus and shields them from endonuclease attacks or microRNA-mediated degradation. The calculated molecular weight of IGF2BP1 is 63 kDa, but modified IGF2BP1 is about 65-70 kDa.

Storage

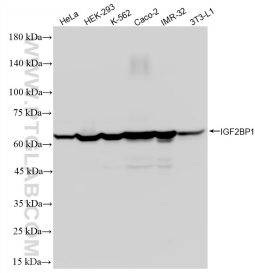
Storage:
Store at -20°C. Stable for one year after shipment.
Storage Buffer:
PBS with 0.02% sodium azide and 50% glycerol, pH7.3
Aliquoting is unnecessary for -20°C storage

***** 20ul sizes contain 0.1% BSA**

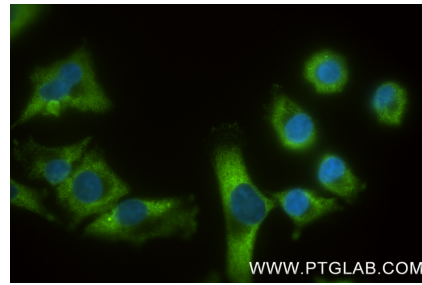
For technical support and original validation data for this product please contact:
T: 1 (888) 4PTGLAB (1-888-478-4522) (toll free in USA), or 1(312) 455-8498 (outside USA)
E: proteintech@ptglab.com
W: ptglab.com

This product is exclusively available under Proteintech Group brand and is not available to purchase from any other manufacturer.

Selected Validation Data



Various lysates were subjected to SDS PAGE followed by western blot with 88123-1-RR (IGF2BP1 antibody) at dilution of 1:10000 incubated at room temperature for 1.5 hours.



Immunofluorescent analysis of (-20°C Ethanol) fixed A375 cells using IGF2BP1 antibody (88123-1-RR, Clone: 260323A4) at dilution of 1:400 and CoraLite® 488-Conjugated Goat Anti-Rabbit IgG(H+L) (SA00013-2).