

For Research Use Only

SH3RF1 Recombinant monoclonal antibody, PBS Only (Detector)

Catalog Number: 88135-2-PBS



Basic Information

Catalog Number: 88135-2-PBS	GenBank Accession Number: BC053671	Purification Method: Protein A purification
Size: 100ug , Concentration: 1 mg/ml by Nanodrop;	GeneID (NCBI): 57630	CloneNo.: 260354D2
Source: Rabbit	UNIPROT ID: Q7Z6JO	
Isotype: IgG	Full Name: SH3 domain containing ring finger 1	
Immunogen Catalog Number: AG6243	Calculated MW: 93 kDa	

Applications

Tested Applications:
Cytometric bead array, Indirect ELISA

Species Specificity:
human

Product Information

88135-2-PBS targets SH3RF1 as part of a matched antibody pair:

MP03367-1: 88135-3-PBS capture and 88135-2-PBS detection (validated in Cytometric bead array)

Unconjugated rabbit recombinant monoclonal antibody in PBS only (BSA and azide free) storage buffer at a concentration of 1 mg/mL, ready for conjugation. Created using Proteintech's proprietary in-house recombinant technology. Recombinant production enables unrivalled batch-to-batch consistency, easy scale-up, and future security of supply.

This conjugation ready format makes antibodies ideal for use in many applications including: ELISAs, multiplex assays requiring matched pairs, mass cytometry, and multiplex imaging applications. Antibody use should be optimized by the end user for each application and assay.

Storage

Storage:
Store at -80°C.

Storage Buffer:
PBS only, pH7.3

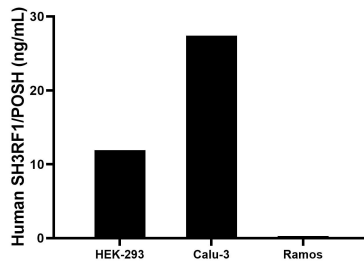
For technical support and original validation data for this product please contact:

T: 1 (888) 4PTGLAB (1-888-478-4522) (toll free in USA), or 1(312) 455-8498 (outside USA)

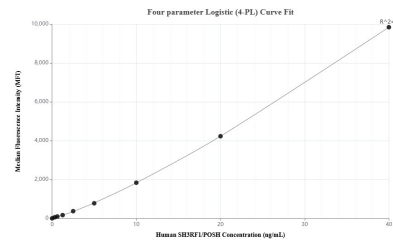
E: proteintech@ptglab.com
W: ptglab.com

This product is exclusively available under Proteintech Group brand and is not available to purchase from any other manufacturer.

Selected Validation Data



The mean SH3RF1/POSH concentration was determined to be 11.9 ng/mL in HEK-293 cell extract based on a 1.2 mg/mL extract load, 27.4 ng/mL in Calu-3 cell extract based on a 1.2 mg/mL extract load, 0.4 ng/mL in Ramos cell extract based on a 1.5 mg/mL extract load.



Cytometric bead array standard curve of MP03367-1, SH3RF1/POSH Recombinant Matched Antibody Pair, PBS Only. Capture antibody: 88135-3-PBS. Detection antibody: 88135-2-PBS. Standard: Ag6243. Range: 0.312-40 ng/mL.