

For Research Use Only

TAF6L Recombinant monoclonal antibody, PBS Only (Detector)

Catalog Number: 88217-2-PBS



Basic Information

Catalog Number: 88217-2-PBS	GenBank Accession Number: BC008785	Purification Method: Protein A purification
Size: 100ug, Concentration: 1 mg/ml by Nanodrop;	GeneID (NCBI): 10629	CloneNo.: 260434C5
Source: Rabbit	UNIPROT ID: Q9Y6J9	
Isotype: IgG	Full Name: TAF6-like RNA polymerase II, p300/CBP-associated factor (PCAF)-associated factor, 65kDa	
Immunogen Catalog Number: AG8180	Calculated MW: 622 aa, 68 kDa	

Applications

Tested Applications:
Cytometric bead array, Indirect ELISA

Species Specificity:
human

Product Information

88217-2-PBS targets TAF6L as part of a matched antibody pair:

MP03409-1: 88217-3-PBS capture and 88217-2-PBS detection (validated in Cytometric bead array)

Unconjugated rabbit recombinant monoclonal antibody in PBS only (BSA and azide free) storage buffer at a concentration of 1 mg/mL, ready for conjugation. Created using Proteintech's proprietary in-house recombinant technology. Recombinant production enables unrivalled batch-to-batch consistency, easy scale-up, and future security of supply.

This conjugation ready format makes antibodies ideal for use in many applications including: ELISAs, multiplex assays requiring matched pairs, mass cytometry, and multiplex imaging applications. Antibody use should be optimized by the end user for each application and assay.

Storage

Storage:
Store at -80°C.

Storage Buffer:
PBS only, pH7.3

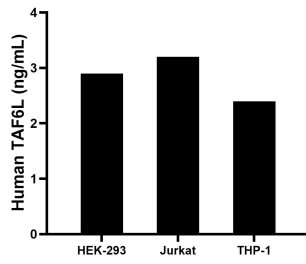
For technical support and original validation data for this product please contact:

T: 1 (888) 4PTGLAB (1-888-478-4522) (toll free in USA), or 1(312) 455-8498 (outside USA)

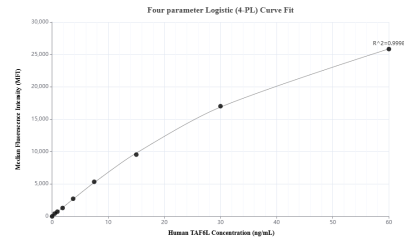
E: proteintech@ptglab.com
W: ptglab.com

This product is exclusively available under Proteintech Group brand and is not available to purchase from any other manufacturer.

Selected Validation Data



The mean TAF6L concentration was determined to be 2.9 ng/mL in HEK-293 cell extract based on a 1.2 mg/mL extract load, 3.2 ng/mL in Jurkat cell extract based on a 1.2 mg/mL extract load, 2.4 ng/mL in THP-1 cell extract based on a 1.2 mg/mL extract load.



Cytometric bead array standard curve of MP03409-1, TAF6L Recombinant Matched Antibody Pair, PBS Only. Capture antibody: 88217-3-PBS. Detection antibody: 88217-2-PBS. Standard: Ag8180. Range: 0.469-60 ng/mL