

For Research Use Only

# HSF1 Recombinant monoclonal antibody, PBS Only (Detector)

Catalog Number: 88318-2-PBS



## Basic Information

<b>Catalog Number:</b> 88318-2-PBS	<b>GenBank Accession Number:</b> BC014638	<b>Purification Method:</b> Protein A purification
<b>Size:</b> 100ug, Concentration: 1 mg/ml by Nanodrop;	<b>GeneID (NCBI):</b> 3297	<b>CloneNo.:</b> 260631H6
<b>Source:</b> Rabbit	<b>UNIPROT ID:</b> Q00613	
<b>Isotype:</b> IgG	<b>Full Name:</b> heat shock transcription factor 1	
<b>Immunogen Catalog Number:</b> AG0739	<b>Calculated MW:</b> 529 aa, 57 kDa	

## Applications

**Tested Applications:**  
Cytometric bead array, Indirect ELISA

**Species Specificity:**  
human

## Product Information

88318-2-PBS targets HSF1 as part of a matched antibody pair:

MP03452-1: 88318-3-PBS capture and 88318-2-PBS detection (validated in Cytometric bead array)

Unconjugated rabbit recombinant monoclonal antibody in PBS only (BSA and azide free) storage buffer at a concentration of 1 mg/mL, ready for conjugation. Created using Proteintech's proprietary in-house recombinant technology. Recombinant production enables unrivalled batch-to-batch consistency, easy scale-up, and future security of supply.

This conjugation ready format makes antibodies ideal for use in many applications including: ELISAs, multiplex assays requiring matched pairs, mass cytometry, and multiplex imaging applications. Antibody use should be optimized by the end user for each application and assay.

## Storage

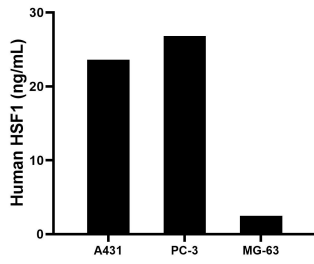
**Storage:**  
Store at -80°C.

**Storage Buffer:**  
PBS only, pH7.3

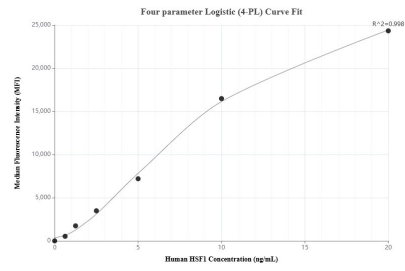
For technical support and original validation data for this product please contact:  
T: 1 (888) 4PTGLAB (1-888-478-4522) (toll free in USA), or 1(312) 455-8498 (outside USA)      E: proteintech@ptglab.com  
W: ptglab.com

**This product is exclusively available under Proteintech Group brand and is not available to purchase from any other manufacturer.**

## Selected Validation Data



The mean HSF1 concentration was determined to be 23.6 ng/mL in A431 cell extract based on a 1.2 mg/mL extract load, 26.8 ng/mL in PC-3 cell extract based on a 1.2 mg/mL extract load, 2.5 ng/mL in MG-63 cell extract based on a 1.2 mg/mL extract load.



Cytometric bead array standard curve of MP03452-1, HSF1 Recombinant Matched Antibody Pair, PBS Only. Capture antibody: 88318-3-PBS. Detection antibody: 88318-2-PBS. Standard: Ag0739. Range: 0.625-20 ng/mL.