

For Research Use Only

GAST Recombinant monoclonal antibody, PBS Only (Detector)

Catalog Number: 88429-1-PBS



Basic Information

Catalog Number: 88429-1-PBS	GenBank Accession Number: NM_000805.4	Purification Method: Protein A purification
Size: 100ug , Concentration: 1 mg/ml by Nanodrop;	GeneID (NCBI): 2520	CloneNo.: 260471E5
Source: Rabbit	UNIPROT ID: P01350	
Isotype: IgG	Full Name: gastrin	
Immunogen Catalog Number: EG3089	Calculated MW: 11 kDa	

Applications

Tested Applications:
Sandwich ELISA, Indirect ELISA

Species Specificity:
human

Product Information

88429-1-PBS targets GAST as part of a matched antibody pair:

MP03432-1: 88429-2-PBS capture and 88429-1-PBS detection (validated in Sandwich ELISA)

Unconjugated rabbit recombinant monoclonal antibody in PBS only (BSA and azide free) storage buffer at a concentration of 1 mg/mL, ready for conjugation. Created using Proteintech's proprietary in-house recombinant technology. Recombinant production enables unrivalled batch-to-batch consistency, easy scale-up, and future security of supply.

This conjugation ready format makes antibodies ideal for use in many applications including: ELISAs, multiplex assays requiring matched pairs, mass cytometry, and multiplex imaging applications. Antibody use should be optimized by the end user for each application and assay.

Storage

Storage:
Store at -80°C.

Storage Buffer:
PBS only, pH7.3

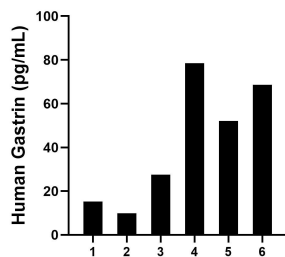
For technical support and original validation data for this product please contact:

T: 1 (888) 4PTGLAB (1-888-478-4522) (toll free in USA), or 1(312) 455-8498 (outside USA)

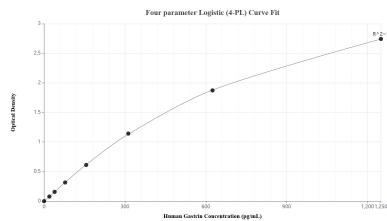
E: proteintech@ptglab.com
W: ptglab.com

This product is exclusively available under Proteintech Group brand and is not available to purchase from any other manufacturer.

Selected Validation Data



Plasma of six individual healthy human donors was measured. The Gastrin concentration of detected samples was determined to be 41.9 pg/mL with a range of 9.8-78.4 pg/mL.



Sandwich ELISA standard curve of MP03432-1, Human Gastrin Recombinant Matched Antibody Pair - PBS only. 88429-2-PBS was coated to a plate as the capture antibody and incubated with serial dilutions of standard Eg3089. 88429-1-PBS was HRP conjugated as the detection antibody. Range: 19.5-1250 pg/mL.