

For Research Use Only

Phospho-RAF1 (Ser259) Recombinant monoclonal antibody, PBS Only

Catalog Number: 88430-1-PBS



Basic Information

Catalog Number: 88430-1-PBS	GenBank Accession Number: BC018119	Purification Method: Protein A purification
Size: 100ug, Concentration: 1 mg/ml by Nanodrop;	GeneID (NCBI): 5894	CloneNo.: 250953G5
Source: Rabbit	UNIPROT ID: P04049	
Isotype: IgG	Full Name: v-raf-1 murine leukemia viral oncogene homolog 1	
	Calculated MW: 648 aa, 73 kDa	
	Observed MW: 70-75 kDa	

Applications

Tested Applications:
WB, Indirect ELISA

Species Specificity:
human

Background Information

Raf-1 proto-oncogene, serine/threonine kinase (RAF1), is a MAP kinase kinase kinase (MAP3K), which functions downstream of the Ras family of membrane associated GTPases to which it binds directly. Phospho-RAF1 (Ser259) is a key inhibitory modification of CRAF within the RAS-MEK-ERK cascade. Phosphorylated mainly by PKA and Akt, this residue recruits 14-3-3 proteins to lock RAF1 in an autoinhibited cytoplasmic conformation, blocking its membrane recruitment and binding to GTP-Ras. Dephosphorylation by PP2A relieves suppression to trigger ERK-driven proliferation. Elevated p-RAF1 (S259) dampens oncogenic MAPK signaling in tumors, while loss of this phosphorylation causes sustained pathway hyperactivation linked to Noonan syndrome and multiple malignancies. (PMID: 11971957, 11756411)

Storage

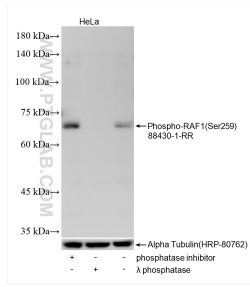
Storage:
Store at -80°C.

Storage Buffer:
PBS only, pH7.3

For technical support and original validation data for this product please contact:
T: 1 (888) 4PTGLAB (1-888-478-4522) (toll free in USA), or 1(312) 455-8498 (outside USA) E: proteintech@ptglab.com
W: ptglab.com

This product is exclusively available under Proteintech Group brand and is not available to purchase from any other manufacturer.

Selected Validation Data



Non-treated HeLa cells, phosphatase inhibitor treated HeLa cells and λ phosphatase treated HeLa cells were subjected to SDS PAGE followed by western blot with 88430-1-RR (Phospho-RAF 1 (Ser259) antibody) at dilution of 1:1000 incubated at room temperature for 1.5 hours. The membrane was stripped and re-blotted with Alpha Tubulin (HRP-80762) antibody as a loading control. This data was developed using the same antibody clone with 88430-1-

