

For Research Use Only

# Phospho-RAF1 (Ser259) Recombinant monoclonal antibody

Catalog Number: 88430-1-RR



## Basic Information

<b>Catalog Number:</b> 88430-1-RR	<b>GenBank Accession Number:</b> BC018119	<b>Purification Method:</b> Protein A purification
<b>Size:</b> 100ul , Concentration: 1000 µg/ml by Nanodrop;	<b>GeneID (NCBI):</b> 5894	<b>CloneNo.:</b> 250953G5
<b>Source:</b> Rabbit	<b>UNIPROT ID:</b> P04049	<b>Recommended Dilutions:</b> WB: 1:500-1:2000
<b>Isotype:</b> IgG	<b>Full Name:</b> v-raf-1 murine leukemia viral oncogene homolog 1	
	<b>Calculated MW:</b> 648 aa, 73 kDa	
	<b>Observed MW:</b> 70-75 kDa	

## Applications

<b>Tested Applications:</b> WB, ELISA	<b>Positive Controls:</b> WB : HeLa cells,
<b>Species Specificity:</b> human	

## Background Information

Raf-1 proto-oncogene, serine/threonine kinase(RAF1), is a MAP kinase kinase kinase (MAP3K), which functions downstream of the Ras family of membrane associated GTPases to which it binds directly. Phospho-RAF1 (Ser259) is a key inhibitory modification of CRAF within the RAS-MEK-ERK cascade. Phosphorylated mainly by PKA and Akt, this residue recruits 14-3-3 proteins to lock RAF1 in an autoinhibited cytoplasmic conformation, blocking its membrane recruitment and binding to GTP-Ras. Dephosphorylation by PP2A relieves suppression to trigger ERK-driven proliferation. Elevated p-RAF1 (S259) dampens oncogenic MAPK signaling in tumors, while loss of this phosphorylation causes sustained pathway hyperactivation linked to Noonan syndrome and multiple malignancies. (PMID: 11971957, 11756411)

## Storage

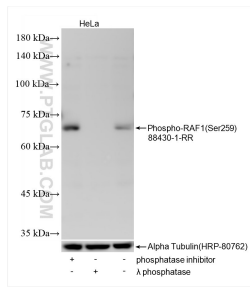
**Storage:**  
Store at -20°C. Stable for one year after shipment.  
**Storage Buffer:**  
PBS with 0.02% sodium azide and 50% glycerol, pH7.3  
Aliquoting is unnecessary for -20°C storage

\*\*\* 20ul sizes contain 0.1% BSA

For technical support and original validation data for this product please contact:  
T: 1 (888) 4PTGLAB (1-888-478-4522) (toll free in USA), or 1(312) 455-8498 (outside USA)  
E: proteintech@ptglab.com  
W: ptglab.com

This product is exclusively available under Proteintech Group brand and is not available to purchase from any other manufacturer.

## Selected Validation Data



Non-treated HeLa cells, phosphatase inhibitor treated HeLa cells and  $\lambda$  phosphatase treated HeLa cells were subjected to SDS PAGE followed by western blot with 88430-1-RR (Phospho-RAF1 (Ser259) antibody) at dilution of 1:1000 incubated at room temperature for 1.5 hours. The membrane was stripped and re-blotted with Alpha Tubulin (HRP-80762) antibody as a loading control.