

For Research Use Only



Anti-Human CD226 Rabbit Recombinant Antibody, PBS Only

Catalog Number: 98002-1-PBS

Basic Information

| | | | | | |
|-----------------|--------------|---------------------------|-----------------|----------------------|------------------------|
| Catalog Number: | 98002-1-PBS | GenBank Accession Number: | BC074787 | Purification Method: | Protein A purification |
| Size: | 1mg, 2 mg/ml | GeneID (NCBI): | 10666 | CloneNo.: | 230041A3 |
| Source: | Rabbit | ENSEMBL Gene ID: | ENSG00000150637 | | |
| Isotype: | IgG | UNIPROT ID: | Q15762 | | |
| | | Full Name: | CD226 molecule | | |
| | | Calculated MW: | 336 aa, 39 kDa | | |

Applications

Tested Applications:
FC

Species Specificity:
human

Background Information

CD226 (DNAM-1) is a ~65 kDa glycoprotein expressed on the surface of NK cells, platelets, monocytes and a subset of T cells. It is a member of the Ig-superfamily containing 2 Ig-like domains of the V-set. CD226 mediates cellular adhesion of platelets and megakaryocytic cells to vascular endothelial cells. The protein also plays a role in megakaryocytic cell maturation. Interactions of CD226 and its ligands, CD155 and CD112, induce NK and T cell-mediated cytotoxicity and cytokine secretion (PMID: 15039383).

Storage

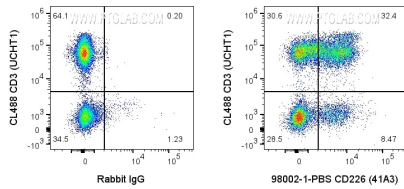
Storage:
Store at -80°C. Stable for one year after shipment.

Storage Buffer:
PBS only

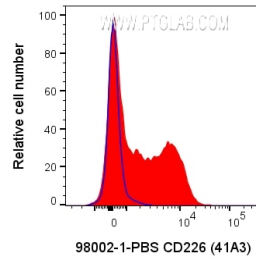
For technical support and original validation data for this product please contact:
T: 1 (888) 4PTGLAB (1-888-478-4522) (toll free in USA), or 1(312) 455-8498 (outside USA)
E: proteintech@ptglab.com
W: ptglab.com

This product is exclusively available under Proteintech Group brand and is not available to purchase from any other manufacturer.

Selected Validation Data



1X10⁶ human PBMCs were surface stained with 0.2 ug Anti-Human CD226 Rabbit Recombinant Antibody (98002-1-PBS, Clone:41A3) or Rabbit IgG control Rabbit PolyAb and CoraLite®647-Conjugated AffiniPure Goat Anti-Rabbit IgG(H+L) at dilution 1:1000. Cells were then stained with CL488 Anti-Human CD3. Cells were not fixed. Lymphocytes were gated.



1X10⁶ human PBMCs were surface stained with 0.2 ug Anti-Human CD226 Rabbit Recombinant Antibody (98002-1-PBS, Clone:41A3) or Rabbit IgG control Rabbit PolyAb and CoraLite®647-Conjugated AffiniPure Goat Anti-Rabbit IgG(H+L) at dilution 1:1000. Cells were not fixed. Lymphocytes were gated.