

For Research Use Only

# Anti-Human CD226 Rabbit Recombinant Antibody



Catalog Number: 98002-1-RR

## Basic Information

<b>Catalog Number:</b> 98002-1-RR	<b>GenBank Accession Number:</b> BC074787	<b>Purification Method:</b> Protein A purification
<b>Size:</b> 100ug, 1000 µg/ml	<b>GeneID (NCBI):</b> 10666	<b>CloneNo.:</b> 230041A3
<b>Source:</b> Rabbit	<b>ENSEMBL Gene ID:</b> ENSG00000150637	
<b>Isotype:</b> IgG	<b>UNIPROT ID:</b> Q15762	
	<b>Full Name:</b> CD226 molecule	
	<b>Calculated MW:</b> 336 aa, 39 kDa	

## Applications

**Tested Applications:**  
FC

**Species Specificity:**  
Human

## Background Information

CD226 (DNAM-1) is a ~65 kDa glycoprotein expressed on the surface of NK cells, platelets, monocytes and a subset of T cells. It is a member of the Ig-superfamily containing 2 Ig-like domains of the V-set. CD226 mediates cellular adhesion of platelets and megakaryocytic cells to vascular endothelial cells. The protein also plays a role in megakaryocytic cell maturation. Interactions of CD226 and its ligands, CD155 and CD112, induce NK and T cell-mediated cytotoxicity and cytokine secretion (PMID: 15039383).

## Storage

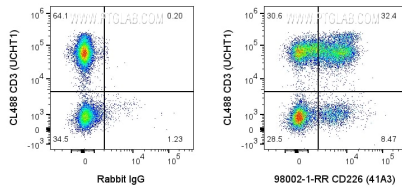
**Storage:**  
Store at 2-8°C. Stable for one year after shipment.

**Storage Buffer:**  
PBS with 0.09% sodium azide.

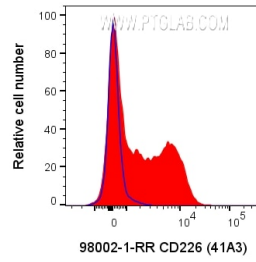
For technical support and original validation data for this product please contact:  
T: 1 (888) 4PTGLAB (1-888-478-4522) (toll free in USA), or 1(312) 455-8498 (outside USA)      E: proteintech@ptglab.com  
W: ptglab.com

This product is exclusively available under Proteintech Group brand and is not available to purchase from any other manufacturer.

## Selected Validation Data



1X10<sup>6</sup> human PBMCs were surface stained with 0.2 ug Anti-Human CD226 Rabbit Recombinant Antibody (98002-1-RR, Clone:41A3) or Rabbit IgG control Rabbit PolyAb and CoraLite®647-Conjugated AffiniPure Goat Anti-Rabbit IgG(H+L) at dilution 1:1000. Cells were then stained with CL488 Anti-Human CD3. Cells were not fixed. Lymphocytes were gated.



1X10<sup>6</sup> human PBMCs were surface stained with 0.2 ug Anti-Human CD226 Rabbit Recombinant Antibody (98002-1-RR, Clone:41A3) or Rabbit IgG control Rabbit PolyAb and CoraLite®647-Conjugated AffiniPure Goat Anti-Rabbit IgG(H+L) at dilution 1:1000. Cells were not fixed. Lymphocytes were gated.