

For Research Use Only



Anti-Human CD226 Rabbit Recombinant Antibody

Catalog Number: 98002-2-RR

Basic Information

Catalog Number:	98002-2-RR	GenBank Accession Number:	BC074787	Purification Method:	Protein A purification
Size:	100ug , 1000 µg/ml	GeneID (NCBI):	10666	CloneNo.:	240673G4
Source:	Rabbit	ENSEMBL Gene ID:	ENSG00000150637		
Isotype:	IgG	UNIPROT ID:	Q15762		
		Full Name:	CD226 molecule		
		Calculated MW:	336 aa, 39 kDa		

Applications

Tested Applications:
FC

Species Specificity:
human

Background Information

CD226 (DNAM-1) is a ~65 kDa glycoprotein expressed on the surface of NK cells, platelets, monocytes and a subset of T cells. It is a member of the Ig-superfamily containing 2 Ig-like domains of the V-set. CD226 mediates cellular adhesion of platelets and megakaryocytic cells to vascular endothelial cells. The protein also plays a role in megakaryocytic cell maturation. Interactions of CD226 and its ligands, CD155 and CD112, induce NK and T cell-mediated cytotoxicity and cytokine secretion (PMID: 15039383).

Storage

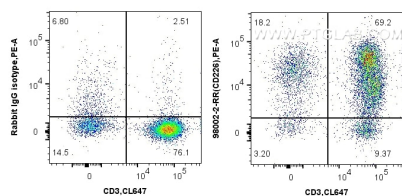
Storage:
Store at 2 - 8°C. Stable for one year after shipment.

Storage Buffer:
PBS with 0.09% sodium azide, pH 7.3.

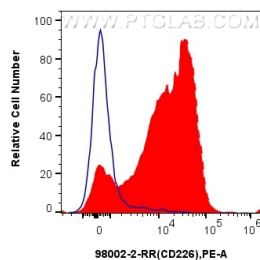
For technical support and original validation data for this product please contact:
T: 1 (888) 4PTGLAB (1-888-478-4522) (toll free in USA), or 1(312) 455-8498 (outside USA)
E: proteintech@ptglab.com
W: ptglab.com

This product is exclusively available under Proteintech Group brand and is not available to purchase from any other manufacturer.

Selected Validation Data



1x10⁶ human PBMCs were surface stained with 0.25 ug Anti-Human CD226 Rabbit Recombinant Antibody (98002-2-RR, Clone: 240673G4) or Isotype Rabbit IgG(H+L). Cells were co-stained with CoraLite® Plus 647 Anti-Human CD3 (OKT3) Mouse IgG2a Recombinant Antibody (CL647-65569, Clone: OKT3). Cells were not fixed. Lymphocytes were gated.



1x10⁶ human PBMCs were surface stained with 0.25 ug Anti-Human CD226 Rabbit Recombinant Antibody (98002-2-RR, Clone:240673G4) (red) or Isotype Control (blue) and PE-Conjugated AffiniPure Goat Anti-Rabbit IgG(H+L). Cells were not fixed. Lymphocytes were gated.