

For Research Use Only

# Anti-Mouse GM-CSF Rabbit Recombinant Antibody

Catalog Number: 98014-1-RR



## Basic Information

Catalog Number:

98014-1-RR

Size:

100ug , 1 mg/ml

Source:

Rabbit

Isotype:

IgG

GenBank Accession Number:

NM-009969

GeneID (NCBI):

12981

UNIPROT ID:

P01587

Full Name:

colony stimulating factor 2  
(granulocyte-macrophage)

Purification Method:

Protein A purification

CloneNo.:

230286E11

## Applications

Tested Applications:

FC (Intra)

Species Specificity:

mouse

## Background Information

Gm-csf, also known as Csf2, is a monomeric glycoprotein secreted by macrophages, T cells, mast cells, NK cells, endothelial cells and fibroblasts that functions as a cytokine. Gm-csf was first characterized as a hematopoietic growth factor that stimulates the proliferation of myeloid cells from bone-marrow progenitors. Gm-csf is now recognized as an important activating and differentiation factor for immune cells, and is essential for a wide range of biological processes in both innate and adaptive immunity. Gm-csf has been shown to protect against pulmonary infection and intestinal inflammation, and it is necessary for normal pulmonary and colon homeostasis.

## Storage

Storage:

Store at 2-8°C. Stable for one year after shipment.

Storage Buffer:

PBS with 0.09% sodium azide.

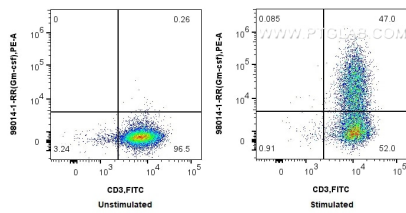
For technical support and original validation data for this product please contact:

T: 1 (888) 4PTGLAB (1-888-478-4522) (toll free  
in USA), or 1(312) 455-8498 (outside USA)

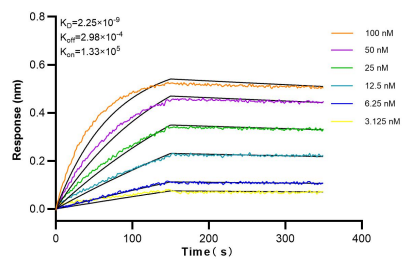
E: [proteintech@ptglab.com](mailto:proteintech@ptglab.com)  
W: [ptglab.com](http://ptglab.com)

This product is exclusively available under Proteintech Group brand and is not available to purchase from any other manufacturer.

## Selected Validation Data



1x10<sup>6</sup> unstimulated or PMA and ionomycin in presence of protein transport inhibitors stimulated C57BL/6 CD3 T cells were intracellularly stained with 0.25 ug Anti-Mouse Gm-csf (98014-1-RR, Clone: 230286E11) and APC-Conjugated AffiniPure Goat Anti-Rabbit IgG(H+L). Cell were then stained with FITC Plus Anti-Mouse CD3. Cells were fixed with 4% PFA and permeabilized with Flow Cytometry Perm Buffer (PF00011-C).



Biolayer interferometry (BLI) kinetic assays of 98014-1-RR against Human Gm-csf were performed. The affinity constant is 2.25 nM.