

For Research Use Only

Anti-Human CD324 (E-cadherin) Rabbit Recombinant Antibody, PBS Only

Catalog Number: 98030-2-PBS



Basic Information

Catalog Number:

98030-2-PBS

Size:

1mg, 2 mg/ml

Source:

Rabbit

Isotype:

IgG

Immunogen Catalog Number:

AG14973

GenBank Accession Number:

BC141838

GeneID (NCBI):

999

UNIPROT ID:

P12830

Full Name:

cadherin 1, type 1, E-cadherin (epithelial)

Calculated MW:

882 aa, 97 kDa

Purification Method:

Protein A purification

CloneNo.:

240159B4

Applications

Tested Applications:

FC

Species Specificity:

human

Background Information

Cadherins are a family of transmembrane glycoproteins that mediate calcium-dependent cell-cell adhesion and play an important role in the maintenance of normal tissue architecture. E-cadherin (epithelial cadherin), also known as CD324, CDH1 (cadherin 1) or CAM 120/80, is a classical member of the cadherin superfamily which also include N-, P-, R-, and B-cadherins. E-cadherin is expressed on the cell surface in most epithelial tissues. The extracellular region of E-cadherin establishes calcium-dependent homophilic trans binding, providing specific interaction with adjacent cells, while the cytoplasmic domain is connected to the actin cytoskeleton through the interaction with p120-, α -, β -, and γ -catenin (plakoglobin). E-cadherin is important in the maintenance of the epithelial integrity, and is involved in mechanisms regulating proliferation, differentiation, and survival of epithelial cell. E-cadherin may also play a role in tumorigenesis. It is considered to be an invasion suppressor protein and its loss is an indicator of high tumor aggressiveness.

Storage

Storage:

Store at -80°C.

Storage Buffer:

PBS Only

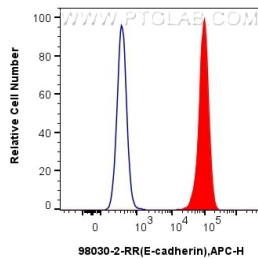
For technical support and original validation data for this product please contact:

T: 1 (888) 4PTGLAB (1-888-478-4522) (toll free in USA), or 1(312) 455-8498 (outside USA)

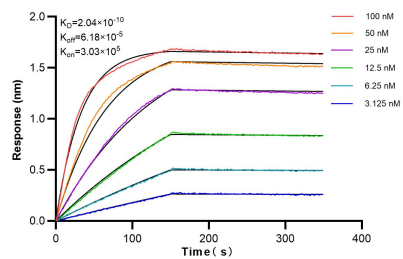
E: proteintech@ptglab.com
W: ptglab.com

This product is exclusively available under Proteintech Group brand and is not available to purchase from any other manufacturer.

Selected Validation Data



1×10^6 MCF-7 cells were surface stained with 0.25 μ g Anti-Human CD324 (E-cadherin) Rabbit Recombinant Antibody (98030-2-RR, Clone:240159B4) and APC-Conjugated AffiniPure Goat Anti-Rabbit IgG(H+L)(red), or 0.25 μ g Isotype Control (blue). Cells should be stained prior to fixation. This data was developed using the same antibody clone with 98030-2-PBS in a different storage buffer formulation.



Biolayer interferometry (BLI) kinetic assays of 98030-2-RR against Human E-cadherin were performed. The affinity constant is 0.204 nM.