

For Research Use Only

Anti-Rat IL-2 Rabbit Recombinant Antibody, PBS Only

Catalog Number: 98046-1-PBS



Basic Information

Catalog Number:

98046-1-PBS

Size:

1mg, 2 mg/ml

Source:

Rabbit

Isotype:

IgG

GenBank Accession Number:

NM_053836

GeneID (NCBI):

116562

UNIPROT ID:

P17108

Full Name:

interleukin 2

Calculated MW:

18 kDa

Purification Method:

Protein A purification

CloneNo.:

240264C7

Applications

Tested Applications:

FC (Intra)

Species Specificity:

rat

Storage

Storage:

Store at -80°C.

Storage Buffer:

PBS Only

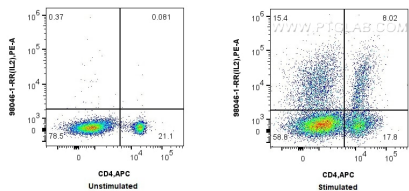
For technical support and original validation data for this product please contact:

T: 1 (888) 4PTGLAB (1-888-478-4522) (toll free in USA), or 1(312) 455-8498 (outside USA)

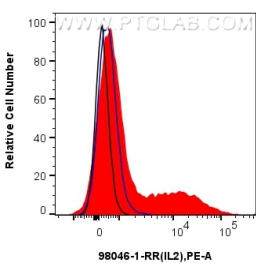
E: proteintech@ptglab.com
W: ptglab.com

This product is exclusively available under Proteintech Group brand and is not available to purchase from any other manufacturer.

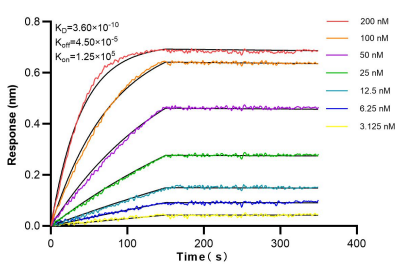
Selected Validation Data



1x10⁶ unstimulated or PMA, Ionomycin and Brefeldin A treated rat splenocytes were intracellularly stained with APC Anti-Rat CD4 (OX-35) and 0.25 ug Anti-Rat IL-2 Rabbit Recombinant Antibody (98046-1-RR, Clone: 240264C7) and PE-Conjugated AffiniPure Goat Anti-Rabbit IgG(H+L). Cells were fixed with 4% PFA and permeabilized with Flow Cytometry Perm Buffer (PF00011-C). This data was developed using the same antibody clone with 98046-1-PBS in a different storage buffer



1x10⁶ PMA, Ionomycin and Brefeldin A treated rat splenocytes were intracellularly stained with 0.25 ug Anti-Rat IL-2 Rabbit Recombinant Antibody (98046-1-RR, Clone: 240264C7) and PE-Conjugated AffiniPure Goat Anti-Rabbit IgG(H+L) (red), or 0.25 ug Isotype Control (blue). Cells were fixed with 4% PFA and permeabilized with Flow Cytometry Perm Buffer (PF00011-C). This data was developed using the same antibody clone with 98046-1-PBS in a different storage buffer



Biolayer interferometry (BLI) kinetic assays of 98046-1-RR against Rat IL2 were performed. The affinity constant is 0.36 nM.