

For Research Use Only

# Anti-Human GM-CSF Rabbit Recombinant Antibody



Catalog Number: 98050-1-RR

## Basic Information

Catalog Number:

98050-1-RR

Size:

100ug , 1 mg/ml

Source:

Rabbit

Isotype:

IgG

GenBank Accession Number:

GeneID (NCBI):

1437

UNIPROT ID:

P04141

Full Name:

colony stimulating factor 2  
(granulocyte-macrophage)

Purification Method:

Protein A purification

CloneNo.:

240183C7

## Applications

Tested Applications:

FC (Intra)

Species Specificity:

human

## Background Information

Granulocyte-macrophage colony-stimulating factor (GM-CSF), also known as colony-stimulating factor 2 (CSF2), is a monomeric glycoprotein secreted by macrophages, T cells, mast cells, natural killer cells, endothelial cells and fibroblasts. GM-CSF is a hematopoietic growth factor that stimulates the development of early erythroid megakaryocytic and eosinophilic progenitor cells (PMID 2990035). GM-CSF stimulates stem cells to produce granulocytes (neutrophils, eosinophils, and basophils) and monocytes (PMID 3021817, 2984574, 6390681).

## Storage

Storage:

Store at 2-8°C. Stable for one year after shipment.

Storage Buffer:

PBS with 0.09% sodium azide.

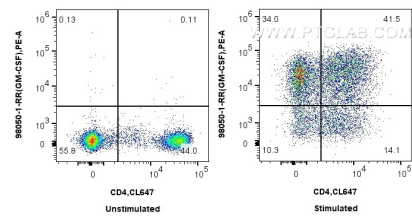
For technical support and original validation data for this product please contact:

T: 1 (888) 4PTGLAB (1-888-478-4522) (toll free  
in USA), or 1(312) 455-8498 (outside USA)

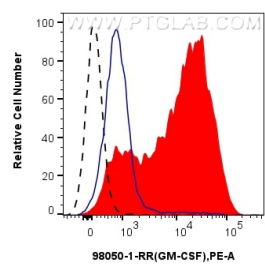
E: [proteintech@ptglab.com](mailto:proteintech@ptglab.com)  
W: [ptglab.com](http://ptglab.com)

This product is exclusively available under Proteintech Group brand and is not available to purchase from any other manufacturer.

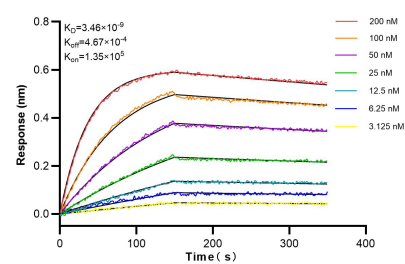
Selected Validation Data



1x10<sup>6</sup> untreated or PMA, Ionomycin and Brefeldin A treated human PBMCs were intracellularly stained with 0.25 ug Anti-Human GM-CSF Rabbit Recombinant Antibody (98050-1-RR, Clone:240183C7) and PE-conjugated Goat Anti-Rabbit IgG. Cell were then stained with CoraLite® Plus 647 Anti-Human CD4. Cells were fixed with 4% PFA and permeabilized with Flow Cytometry Perm Buffer (PF00011-C).



1x10<sup>6</sup> untreated (black) or PMA, Ionomycin and Brefeldin A treated human PBMCs were intracellularly stained with 0.25 ug Anti-Human GM-CSF Rabbit Recombinant Antibody (98050-1-RR, Clone:240183C7) and PE-conjugated Goat Anti-Rabbit IgG(red). 1x10<sup>6</sup> PMA, Ionomycin and Brefeldin A treated human PBMCs were intracellularly stained with 0.25 ug Isotype Control and PE-conjugated Goat Anti-Rabbit IgG (blue). Cells were fixed with 4% PFA and permeabilized



Bi-layer interferometry (BLI) kinetic assays of 98050-1-RR against Human GM-CSF were performed. The affinity constant is 3.46 nM.