

For Research Use Only

Anti-Human LIGHT/CD258 Rabbit Recombinant Antibody, PBS Only

Catalog Number: 98063-1-PBS



Basic Information

Catalog Number:

98063-1-PBS

Size:

1mg, 2mg/ml

Source:

Rabbit

Isotype:

IgG

GenBank Accession Number:

NM_003807

GeneID (NCBI):

8740

UNIPROT ID:

O43557

Full Name:

tumor necrosis factor (ligand) superfamily, member 14

Calculated MW:

26KD

Purification Method:

Protein A purification

CloneNo.:

240694D7

Applications

Tested Applications:

FC

Species Specificity:

human

Background Information

LIGHT, also known as TNFSF14, HVEM, or CD258, is a type II transmembrane protein that belongs to the TNF superfamily (PMID: 9462508). It is predominantly expressed in lymphoid tissues and produced by activated T cells and immature dendritic cells (DCs) (PMID: 9462508; 10754304). Through its two primary functional receptors HVEM (TNFSF14) and lymphotoxin β receptor (LT β R), LIGHT signaling is involved in development and maintenance of lymphoid tissues, as well as innate and adaptive immune responses (PMID: 24575096; 26720335). In addition to the membrane form, LIGHT can also exist as a soluble form generated by cleavage of the extracellular portion of the membrane form.

Storage

Storage:

Store at -80°C.

Storage Buffer:

PBS Only

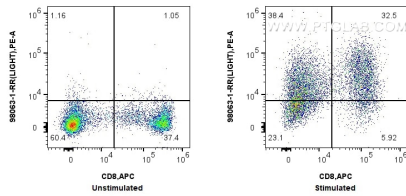
For technical support and original validation data for this product please contact:

T: 1 (888) 4PTGLAB (1-888-478-4522) (toll free in USA), or 1(312) 455-8498 (outside USA)

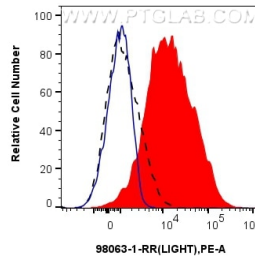
E: proteintech@ptglab.com
W: ptglab.com

This product is exclusively available under Proteintech Group brand and is not available to purchase from any other manufacturer.

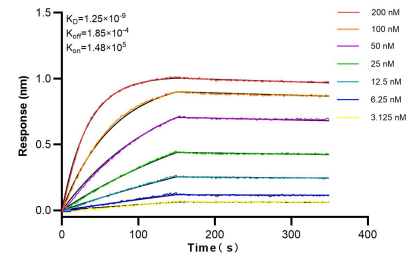
Selected Validation Data



1x10⁶ untreated or PMA, Ionomycin and Brefeldin A treated human PBMCs were stained with 0.25 ug Anti-Human LIGHT/CD258 Rabbit Recombinant Antibody (98063-1-RR, Clone:240694D7) and PE-Conjugated AffiniPure Goat Anti-Rabbit IgG (H+L). Cells were then stained with APC Anti-Human CD8a. Cells were not fixed. This data was developed using the same antibody clone with 98063-1-PBS in a different storage buffer formulation.



1x10⁶ untreated (black) or PMA, Ionomycin and Brefeldin A treated (red) human PBMCs were stained with 0.25 ug Anti-Human LIGHT/CD258 Rabbit Recombinant Antibody (98063-1-RR, Clone:240694D7) and PE-Conjugated AffiniPure Goat Anti-Rabbit IgG (H+L), or 0.25 ug Isotype Control (blue). Cells were not fixed. This data was developed using the same antibody clone with 98063-1-PBS in a different storage buffer formulation.



Biolayer interferometry (BLI) kinetic assays of 98063-1-RR against Human LIGHT/CD258 were performed. The affinity constant is 1.25 nM.