

For Research Use Only

# Anti-Mouse E-selectin/CD62E Rabbit Recombinant Antibody

Catalog Number: 98065-1-RR



## Basic Information

Catalog Number:

98065-1-RR

Size:

100ug , 1000 µg/ml

Source:

Rabbit

Isotype:

IgG

GenBank Accession Number:

NM\_011345.2

GeneID (NCBI):

20339

UNIPROT ID:

Q00690

Full Name:

selectin, endothelial cell

Calculated MW:

67KD

Purification Method:

Protein A purification

CloneNo.:

240700D4

## Applications

Tested Applications:

FC

Species Specificity:

mouse

## Background Information

E-selectin, also known as CD62E or ELAM-1, is a member of the selectin family of adhesion molecules that also includes L-selectin and P-selectin. E-selectin is an inducible endothelial cell surface molecule. Its expression on endothelial cells is transcriptionally upregulated by various proinflammatory substances such as IL-1, TNF $\alpha$  and lipopolysaccharide (LPS). Besides, it can be secreted by endothelial cells, and can be detected in a soluble form (sE-selectin) in serum. During inflammation, E-selectin plays an important part in recruiting leukocytes to the site of injury. (PMID: 2827173; 1382417; 8943958)

## Storage

Storage:

Store at 2 - 8°C. Stable for one year after shipment.

Storage Buffer:

PBS with 0.09% sodium azide, pH 7.3.

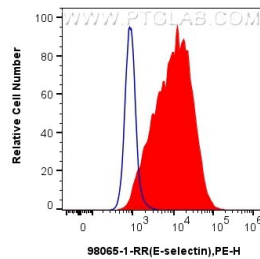
For technical support and original validation data for this product please contact:

T: 1 (888) 4PTGLAB (1-888-478-4522) (toll free in USA), or 1(312) 455-8498 (outside USA)

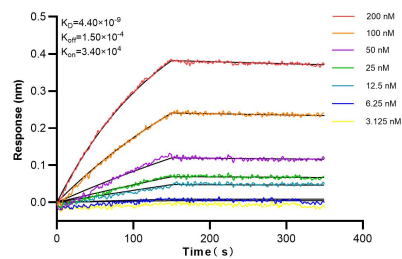
E: [proteintech@ptglab.com](mailto:proteintech@ptglab.com)  
W: [ptglab.com](http://ptglab.com)

This product is exclusively available under Proteintech Group brand and is not available to purchase from any other manufacturer.

## Selected Validation Data



$1 \times 10^6$  bEnd.3 cells were surface stained with 0.25  $\mu$ g Anti-Mouse E-selectin/CD62E Rabbit Recombinant Antibody (98065-1-RR, Clone:240700D4) (red) or isotype control (blue) and PE-Conjugated AffiniPure Goat Anti-Rabbit IgG. Cells were not fixed.



Biolayer interferometry (BLI) kinetic assays of 98065-1-RR against Mouse E-selectin/CD62E were performed. The affinity constant is 4.40 nM.