

For Research Use Only

Anti-Mouse IL-6 Rabbit Recombinant Antibody, PBS Only

Catalog Number: 98089-1-PBS



Basic Information

Catalog Number:

98089-1-PBS

Size:

1mg, 2mg/ml

Source:

Rabbit

Isotype:

IgG

GenBank Accession Number:

NM_031168

GeneID (NCBI):

16193

UNIPROT ID:

P08505

Full Name:

interleukin 6

Calculated MW:

24 kDa

Purification Method:

Protein A purification

CloneNo.:

240701E8

Applications

Tested Applications:

FC (Intra)

Species Specificity:

mouse

Background Information

Interleukin-6 (IL-6) is an interleukin that acts as both a pro-inflammatory and anti-inflammatory cytokine. IL-6 protein is secreted by a variety of cell types including T cells and macrophages as phosphorylated and variably glycosylated molecule. IL-6 plays an essential role in the final differentiation of B-cells into Ig-secreting cells involved in lymphocyte and monocyte differentiation. It induces myeloma and plasmacytoma growth and induces nerve cells differentiation Acts on B-cells, T-cells, hepatocytes, hematopoietic progenitor cells and cells of the CNS. IL-6 is also considered a myokine, a cytokine produced from muscle, and is elevated in response to muscle contraction. IL-6 has been shown to interact with interleukin-6 receptor and glycoprotein 130. Additionally, IL-6 is involved in hematopoiesis, bone metabolism, and cancer progression, and has been defined an essential role in directing transition from innate to acquired immunity.

Storage

Storage:

Store at -80°C.

Storage Buffer:

PBS Only

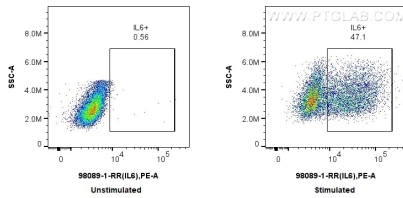
For technical support and original validation data for this product please contact:

T: 1 (888) 4PTGLAB (1-888-478-4522) (toll free in USA), or 1(312) 455-8498 (outside USA)

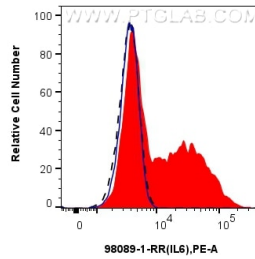
E: proteintech@ptglab.com
W: ptglab.com

This product is exclusively available under Proteintech Group brand and is not available to purchase from any other manufacturer.

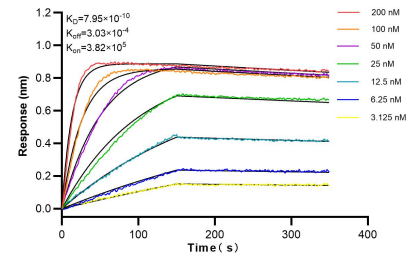
Selected Validation Data



1x10⁶ LPS treated RAW 264.7 cells were intracellularly stained with 0.25 ug Anti-Mouse IL-6 Rabbit Recombinant Antibody (98089-1-RR, Clone:240701E8) and PE-Conjugated AffiniPure Goat Anti-Rabbit IgG(H+L), or 1x10⁶ untreated RAW 264.7 cells were intracellularly stained with 0.25 ug Anti-Mouse IL-6 Rabbit Recombinant Antibody (98089-1-RR, Clone:240701E8) and PE-Conjugated AffiniPure Goat Anti-Rabbit IgG(H+L). Cells were fixed with 4% PFA and



1x10⁶ LPS treated RAW 264.7 cells were intracellularly stained with 0.25 ug Anti-Mouse IL-6 Rabbit Recombinant Antibody (98089-1-RR, Clone:240701E8) (red), or Isotype Control (blue), or 1x10⁶ LPS treated RAW 264.7 cells were intracellularly stained with 0.25 ug Anti-Mouse IL-6 Rabbit Recombinant Antibody (98089-1-RR, Clone:240701E8) (green) and PE-Conjugated AffiniPure Goat Anti-Rabbit IgG(H+L). Cells were fixed with 4% PFA and permeabilized



Bi-layer interferometry (BLI) kinetic assays of 98089-1-RR against Mouse IL-6 were performed. The affinity constant is 0.795 nM.