

For Research Use Only

Anti-Human BTLA/CD272 Rabbit Recombinant Antibody, PBS Only (Capture)

Catalog Number: 98096-1-PBS



Basic Information

Catalog Number:

98096-1-PBS

Size:

1mg, 2 mg/ml

Source:

Rabbit

Isotype:

IgG

GenBank Accession Number:

BC107091

GeneID (NCBI):

151888

UNIPROT ID:

Q7Z6A9

Full Name:

B and T Lymphocyte associated

Calculated MW:

289 aa, 33 kDa

Purification Method:

Protein A purification

CloneNo.:

241318H5

Applications

Tested Applications:

FC, Cytometric bead array, Indirect ELISA

Species Specificity:

human

Product Information

98096-1-PBS targets BTLA/CD272 as part of a matched antibody pair:

MP01168-2: 98096-1-PBS capture and 84262-2-PBS detection (validated in Cytometric bead array)

Unconjugated rabbit recombinant monoclonal antibody in PBS only (BSA and azide free) storage buffer at a concentration of 1 mg/mL, ready for conjugation. Created using Proteintech's proprietary in-house recombinant technology. Recombinant production enables unrivalled batch-to-batch consistency, easy scale-up, and future security of supply.

This conjugation ready format makes antibodies ideal for use in many applications including: ELISAs, multiplex assays requiring matched pairs, mass cytometry, and multiplex imaging applications. Antibody use should be optimized by the end user for each application and assay.

Background Information

BTLA (B and T lymphocyte attenuator), also known as CD272, is a member of the CD28 superfamily and is a type I membrane glycoprotein identified as an inhibitory receptor (PMID: 33859648). BTLA is extensively expressed in lymph nodes, thymus, and spleen, with little or no expression in organs such as the heart, kidney, brain, and liver (PMID: 33859648). Among immune cells, BTLA is primarily expressed in B and T cells, with higher expression in B cells compared to T cells in the mouse spleen (PMID: 33859648). BTLA plays a crucial role in regulating stimulatory and inhibitory signals in immune responses.

Storage

Storage:

Store at -80°C.

Storage Buffer:

PBS Only

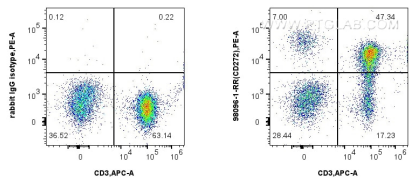
For technical support and original validation data for this product please contact:

T: 1 (888) 4PTGLAB (1-888-478-4522) (toll free in USA), or 1(312) 455-8498 (outside USA)

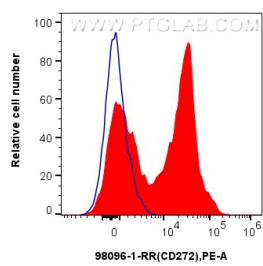
E: proteintech@ptglab.com
W: ptglab.com

This product is exclusively available under Proteintech Group brand and is not available to purchase from any other manufacturer.

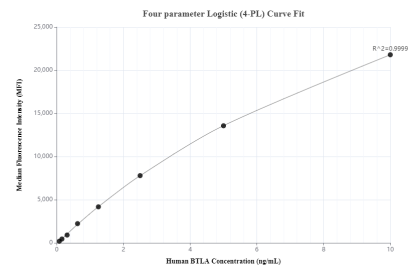
Selected Validation Data



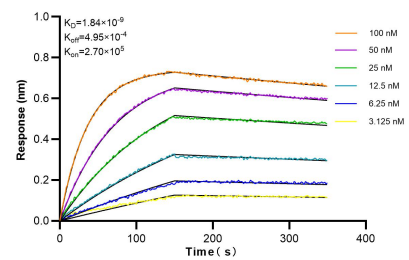
1x10⁶ human PBMCs were surface stained with 0.25 ug Anti-Human BTLA/CD272 Rabbit Recombinant Antibody (98096-1-RR, Clone: 241318H5) or Isotype Control and PE-conjugated Goat Anti-Rabbit IgG. Cells were co-stained with APC Anti-Human CD8 (UCHT4) Mouse IgG2a Recombinant Antibody (APC-65559, Clone: UCHT4). Cells were incubated with FC Receptor Block prior to staining. Cells were not fixed. Lymphocytes were gated. This data was



1x10⁶ human PBMCs were surface stained with 0.25 ug Anti-Human BTLA/CD272 Rabbit Recombinant Antibody (98096-1-RR, Clone: 241318H5) or Isotype Control and PE-conjugated Goat Anti-Rabbit IgG. Cells were incubated with FC Receptor Block prior to staining. Cells were not fixed. Lymphocytes were gated. This data was developed using the same antibody clone with 98096-1-PBS in a different storage buffer formulation.



Cytometric bead array standard curve of MP01168-2, BTLA/CD272 Recombinant Matched Antibody Pair, PBS Only. Capture antibody: 98096-1-PBS. Detection antibody: 84262-2-PBS. Standard: RP02326. Range: 0.078-10 ng/mL.



Bioluminescence resonance transfer (BLI) kinetic assays of 98096-1-RR against Human BTLA/CD272 were performed. The affinity constant is 1.84 nM.