

For Research Use Only

Anti-Human ICAM3/CD50 Rabbit Recombinant Antibody, PBS Only (Capture)

Catalog Number: 98097-1-PBS



Basic Information

Catalog Number: 98097-1-PBS	GenBank Accession Number: BC058903	Purification Method: Protein A purification
Size: 1mg, 2mg/ml	GeneID (NCBI): 3385	CloneNo.: 241418E8
Source: Rabbit	UNIPROT ID: P32942	
Isotype: IgG	Full Name: intercellular adhesion molecule 3	
	Calculated MW: 547 aa, 60 kDa	

Applications

Tested Applications:
FC, Cytometric bead array, Indirect ELISA

Species Specificity:
human

Product Information

98097-1-PBS targets ICAM3/CD50 as part of a matched antibody pair:

MP01223-1: 98097-1-PBS capture and 84335-3-PBS detection (validated in Cytometric bead array)

Unconjugated rabbit recombinant monoclonal antibody in PBS only (BSA and azide free) storage buffer at a concentration of 1 mg/mL, ready for conjugation. Created using Proteintech's proprietary in-house recombinant technology. Recombinant production enables unrivalled batch-to-batch consistency, easy scale-up, and future security of supply.

This conjugation ready format makes antibodies ideal for use in many applications including: ELISAs, multiplex assays requiring matched pairs, mass cytometry, and multiplex imaging applications. Antibody use should be optimized by the end user for each application and assay.

Background Information

The intercellular adhesion molecule (ICAM) family is a subfamily of immunoglobulin superfamily with five known ICAM family members (ICAM1 to ICAM5) which play a role in inflammation, immune responses, and intracellular signaling (PMID: 23287428; 29477378). ICAM3, also known as CD50, is a type I transmembrane glycoprotein that contains five C2-type immunoglobulin-like domains in its extracellular region, a single transmembrane segment, and a C-terminus cytoplasmic tail. ICAM3 is selectively expressed on leukocytes (PMID: 1730916; 8132828). It is the primary ligand for LFA-1 and is involved in various immune processes, including T-cell activation, and macrophage recognition of apoptotic cells (PMID: 11812993; 23775590).

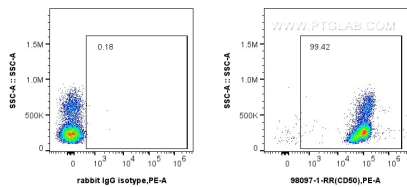
Storage

Storage:
Store at -80°C.
Storage Buffer:
PBS Only

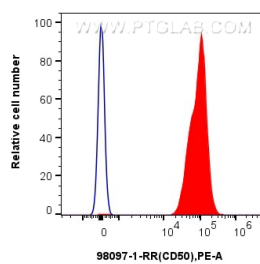
For technical support and original validation data for this product please contact:
T: 1 (888) 4PTGLAB (1-888-478-4522) (toll free in USA), or 1(312) 455-8498 (outside USA)
E: proteintech@ptglab.com
W: ptglab.com

This product is exclusively available under Proteintech Group brand and is not available to purchase from any other manufacturer.

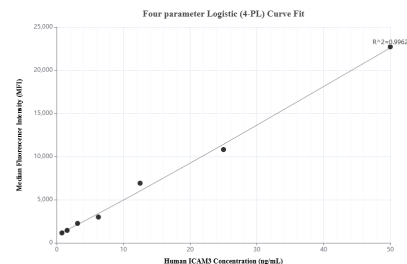
Selected Validation Data



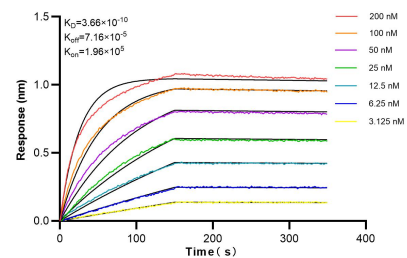
1x10⁶ human PBMCs were surface stained with 0.25 ug Anti-Human ICAM3/CD50 Rabbit Recombinant Antibody (98097-1-RR, Clone:241418E8) or Isotype Control and PE-conjugated Goat Anti-Rabbit IgG. Cells were incubated with FC Receptor Block prior to staining. Cells were not fixed. This data was developed using the same antibody clone with 98097-1-PBS in a different storage buffer formulation.



1x10⁶ human PBMCs were surface stained with 0.25 ug Anti-Human ICAM3/CD50 Rabbit Recombinant Antibody (98097-1-RR, Clone:241418E8) or Isotype Control and PE-conjugated Goat Anti-Rabbit IgG. Cells were incubated with FC Receptor Block prior to staining. Cells were not fixed. This data was developed using the same antibody clone with 98097-1-PBS in a different storage buffer formulation.



Cytometric bead array standard curve of MP01223-1, ICAM3/CD50 Recombinant Matched Antibody Pair, PBS Only. Capture antibody: 98097-1-PBS. Detection antibody: 84335-3-PBS. Standard: RP02342. Range: 0.781-50 ng/mL.



Biolayer interferometry (BLI) kinetic assays of 98097-1-RR against Human ICAM3/CD50 were performed. The affinity constant is 0.366 nM.