

For Research Use Only

Anti-Human SIRP Alpha/CD172a Rabbit Recombinant Antibody, PBS Only

Catalog Number: 98101-1-PBS



Basic Information

Catalog Number:

98101-1-PBS

Size:

1mg, 2mg/ml

Source:

Rabbit

Isotype:

IgG

GenBank Accession Number:

NM_080792

GeneID (NCBI):

140885

UNIPROT ID:

P78324

Full Name:

signal-regulatory protein alpha

Calculated MW:

55 kDa

Purification Method:

Protein A purification

CloneNo.:

240789E1

Applications

Tested Applications:

FC

Species Specificity:

human

Background Information

SIRP Alpha, also known as CD172a, SHPS-1, and BIT, belongs to the SIRP family. SIRP Alpha is a transmembrane glycoprotein expressed explicitly on myeloid cells and provides a "do not eat me" signal after engaging with integrin-associated protein CD47 on tumor cells (PMID: 36419386). SIRP Alpha shows heterogeneity in molecular weight (~65-120 kDa) in various tissues due to differential glycosylation (PMID: 18051954).

Storage

Storage:

Store at -80°C.

Storage Buffer:

PBS Only

For technical support and original validation data for this product please contact:

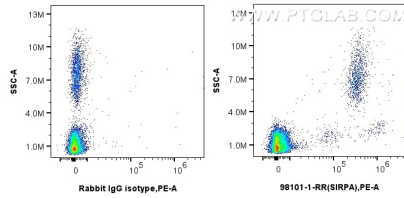
T: 1 (888) 4PTGLAB (1-888-478-4522) (toll free in USA), or 1(312) 455-8498 (outside USA)

E: proteintech@ptglab.com

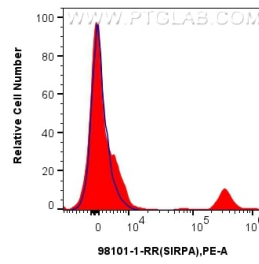
W: ptglab.com

This product is exclusively available under Proteintech Group brand and is not available to purchase from any other manufacturer.

Selected Validation Data



1x10⁶ human peripheral blood leukocytes were surface stained with 0.25 ug Anti-Human SIRP Alpha/CD172a Rabbit Recombinant Antibody (98101-1-RR, Clone: 240789E1) or Isotype Control, and PE-conjugated Goat Anti-Rabbit IgG. Cells were incubated with FC Receptor Block prior to staining. Cells were not fixed. This data was developed using the same antibody clone with 98101-1-PBS in a different storage buffer formulation.



1x10⁶ human peripheral blood leukocytes were surface stained with 0.25 ug Anti-Human SIRPA Rabbit Recombinant Antibody (98101-1-RR, Clone: 240789E1) (red) or Isotype Control (blue), and PE-conjugated Goat Anti-Rabbit IgG. Cells were incubated with FC Receptor Block prior to staining. Cells were not fixed. This data was developed using the same antibody clone with 98101-1-PBS in a different storage buffer formulation.