

For Research Use Only

Anti-Human CD160 Rabbit Recombinant Antibody, PBS Only

Catalog Number: 98111-1-PBS



Basic Information

Catalog Number:

98111-1-PBS

Size:

1mg, 2 mg/ml

Source:

Rabbit

Isotype:

IgG

GenBank Accession Number:

BC014465

GeneID (NCBI):

11126

UNIPROT ID:

O95971

Full Name:

CD160 molecule

Calculated MW:

20 kDa

Purification Method:

Protein A purification

CloneNo.:

241415F2

Applications

Tested Applications:

FC

Species Specificity:

human

Background Information

CD160 is a glycosylphosphatidylinositol (GPI)-anchored protein that is expressed on almost all intestinal intraepithelial lymphocytes (IELs), gamma delta T cells, CD56 (dim) CD16+ cytotoxic NK cells, and a minor subset of CD4+ and CD8+ T cells (PMID: 31332204; 25179432). The binding of CD160 to both classical and non-classical MHC I enhances NK and CD8+ cytotoxic T lymphocyte functions (PMID: 25179432). CD160 is a ligand for HVEM (herpes virus entry mediator) and the binding of CD160 to HVEM inhibits T cell activity (PMID: 19426226).

Storage

Storage:

Store at -80°C.

Storage Buffer:

PBS Only

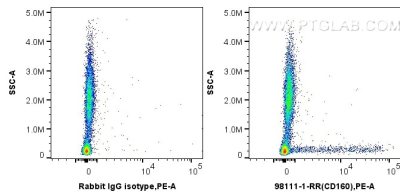
For technical support and original validation data for this product please contact:

T: 1 (888) 4PTGLAB (1-888-478-4522) (toll free
in USA), or 1(312) 455-8498 (outside USA)

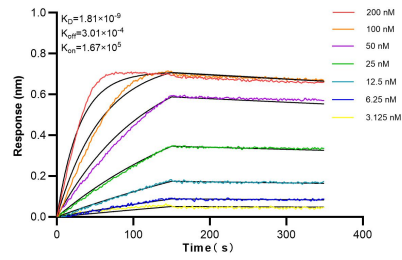
E: proteintech@ptglab.com
W: ptglab.com

This product is exclusively available under Proteintech Group brand and is not available to purchase from any other manufacturer.

Selected Validation Data



1x10⁶ human peripheral blood leukocytes were surface stained with 0.25 ug Anti-Human CD160 Rabbit Recombinant Antibody (98111-1-RR, Clone: 241415F2) (right) or 0.25 ug Isotype Control (left) and PE-Conjugated AffiniPure Goat Anti-Rabbit IgG(H+L). Cells were not fixed. This data was developed using the same antibody clone with 98111-1-PBS in a different storage buffer formulation.



Biolayer interferometry (BLI) kinetic assays of 98111-1-RR against Human CD160 were performed. The affinity constant is 1.81 nM.