

For Research Use Only

Anti-Human TIM3 Rabbit Recombinant Antibody

Catalog Number: 98115-1-RR



Basic Information

Catalog Number:

98115-1-RR

Size:

100ug, 1000 µg/ml

Source:

Rabbit

Isotype:

IgG

GenBank Accession Number:

BC020843

GeneID (NCBI):

84868

UNIPROT ID:

Q8TDQ0

Full Name:

hepatitis A virus cellular receptor 2

Calculated MW:

301 aa, 33 kDa

Purification Method:

Protein A purification

CloneNo.:

241422H1

Applications

Tested Applications:

FC

Species Specificity:

human

Background Information

TIM3, also known as HAVCR2, is a member of the recently discovered T cell Ig and mucin domain-containing molecule superfamily. TIM3 is a negative regulatory molecule that is important for T cell tolerance and has a crucial role in autoimmunity and T cell exhaustion during chronic viral infection (PMID: 23180819). TIM3 is expressed by T-helper type 1 (Th1) cells, macrophage, monocyte, dendritic cells, CD8+ T cell and other lymphocyte subsets. Galectin-9 is a ligand for TIM3. TIM3-galectin-9 pathway negatively regulates T helper type 1 immunity (PMID: 16286920).

Storage

Storage:

Store at 2 - 8°C. Stable for one year after shipment.

Storage Buffer:

PBS with 0.09% sodium azide, pH 7.3.

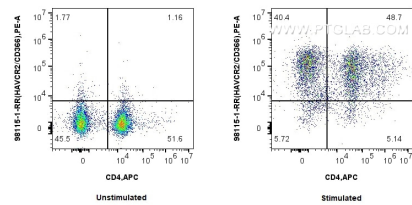
For technical support and original validation data for this product please contact:

T: 1 (888) 4PTGLAB (1-888-478-4522) (toll free in USA), or 1(312) 455-8498 (outside USA)

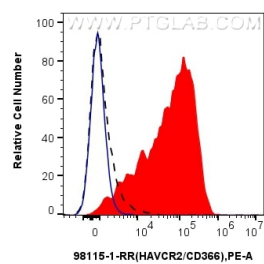
E: proteintech@ptglab.com
W: ptglab.com

This product is exclusively available under Proteintech Group brand and is not available to purchase from any other manufacturer.

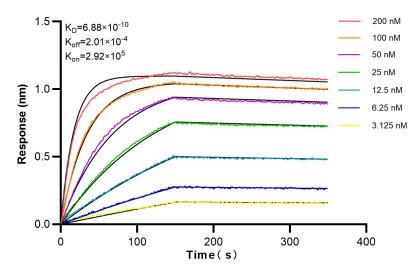
Selected Validation Data



1x10⁶ untreated or anti-CD3/CD28 treated human PBMCs were surface stained with 0.25 ug Anti-Human TIM3 Rabbit Recombinant Antibody (98115-1-RR, Clone: 241422H1) or 0.25 ug Isotype Control, and PE-Conjugated AffiniPure Goat Anti-Rabbit IgG(H+L). Cells were co-stained with APC Anti-Human CD4 (RPA-T4) (APC-65143, Clone: RPA-T4). Cells were not fixed.



1x10⁶ anti-CD3/CD28 treated human PBMCs were surface stained with 0.25 ug Anti-Human TIM3 Rabbit Recombinant Antibody (98115-1-RR, Clone: 241422H1) (red) or 0.25 ug Isotype Control (blue), and PE-Conjugated AffiniPure Goat Anti-Rabbit IgG(H+L). 1x10⁶ untreated human PBMCs were surface stained with 0.25 ug Anti-Human TIM3 Rabbit Recombinant Antibody (98115-1-RR, Clone: 241422H1) and PE-Conjugated AffiniPure Goat Anti-Rabbit IgG(H+L) (black, dashed). Cells were not fixed.



Biolayer interferometry (BLI) kinetic assays of 98115-1-RR against Human TIM3 were performed. The affinity constant is 0.688 nM.