

For Research Use Only

Anti-Human CD244 Rabbit Recombinant Antibody, PBS Only

Catalog Number: 98133-1-PBS



Basic Information

Catalog Number:

98133-1-PBS

Size:

1mg, 2 mg/ml

Source:

Rabbit

Isotype:

IgG

GenBank Accession Number:

BC053985

GeneID (NCBI):

51744

UNIPROT ID:

Q9BZW8

Full Name:

CD244 molecule, natural killer cell
receptor 2B4

Calculated MW:

365 aa, 41 kDa

Purification Method:

Protein A purification

CloneNo.:

241260G10

Applications

Tested Applications:

FC

Species Specificity:

human

Background Information

CD244, also known as SLAMF4 or 2B4, is a type I transmembrane glycoprotein belonging to the signaling lymphocyte activation molecule (SLAM) family. It consists of an extracellular segment with two immunoglobulin (Ig)-like domains, a transmembrane region, and a cytoplasmic domain containing tyrosine-based motifs (PMID: 9841922; 30546369). CD244 is present on natural killer (NK) cells, $\gamma\delta$ T cells, a subset of CD8⁺ T cells, monocytes, basophils, dendritic cells, and myeloid-derived suppressor cells (MDSCs) (PMID: 30546369). It binds to CD48 with high affinity and transmits stimulatory or inhibitory signals that regulate immune function (PMID: 9841922; 18523281).

Storage

Storage:

Store at -80°C.

Storage Buffer:

PBS Only

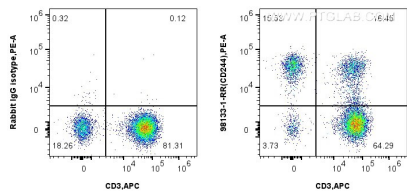
For technical support and original validation data for this product please contact:

T: 1 (888) 4PTGLAB (1-888-478-4522) (toll free
in USA), or 1(312) 455-8498 (outside USA)

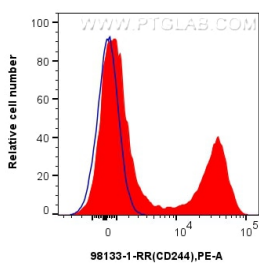
E: proteintech@ptglab.com
W: ptglab.com

This product is exclusively available under Proteintech Group brand and is not available to purchase from any other manufacturer.

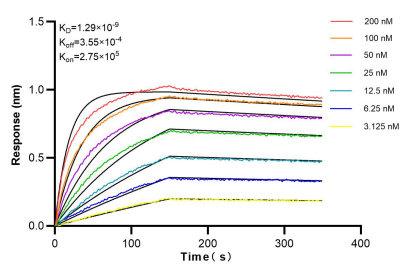
Selected Validation Data



1x10⁶ human PBMCs were surface stained with 0.25 ug Anti-Human CD244 Rabbit Recombinant Antibody (98133-1-RR, Clone: 241260G10) or Isotype Control, and PE-Conjugated Goat Anti-Rabbit IgG(H+L). Cells were co-stained with APC Anti-Human CD3 (OKT3) Mouse IgG2a Recombinant Antibody (APC-65569, Clone: OKT3). Cells were incubated with FC Receptor Block prior to staining. Cells were not fixed. This data was developed using the same antibody clone



1x10⁶ human PBMCs were surface stained with 0.25 ug Anti-Human CD244 Rabbit Recombinant Antibody (98133-1-RR, Clone:241260G10) (red) or Isotype Control (blue), and PE-Conjugated Goat Anti-Rabbit IgG(H+L). Cells were incubated with FC Receptor Block prior to staining. Cells were not fixed. This data was developed using the same antibody clone with 98133-1-PBS in a different storage buffer formulation.



Biolayer interferometry (BLI) kinetic assays of 98133-1-RR against Human CD244 were performed. The affinity constant is 1.29 nM.