

For Research Use Only

# Rabbit IgG Isotype Control Recombinant Antibody

Catalog Number: 98136-1-RR

1 Publications



## Basic Information

Catalog Number:

98136-1-RR

Size:

100ug , 1000 µg/ml

Source:

Rabbit

Isotype:

IgG

GenBank Accession Number:

GeneID (NCBI):

Full Name:

Purification Method:

Protein A purification

CloneNo.:

240953C9

Recommended Dilutions:

WB 1:500-1:2000

IHC 1:250-1:1000

IF/ICC 1:50-1:500

## Applications

Tested Applications:

WB, IHC, IF/ICC, FC, FC (Intra), IP

Cited Applications:

IP

Species Specificity:

n/a

Positive Controls:

WB :

IHC :

IF/ICC :

**Note-IHC: suggested antigen retrieval with TE buffer pH 9.0; (\*) Alternatively, antigen retrieval may be performed with citrate buffer pH 6.0**

## Background Information

This product is an isotype control antibody, which is used to estimate the non-specific binding of target primary antibodies due to Fc receptor binding or other protein-protein interactions. An isotype control antibody should have the same immunoglobulin type and be used at the same concentration as the test antibody.

## Notable Publications

Author	Pubmed ID	Journal	Application
Hai-Qi Wu	39984622	Acta Pharmacol Sin	IP

## Storage

Storage:

Store at 2 - 8°C. Stable for one year after shipment.

Storage Buffer:

PBS with 0.09% sodium azide, pH7.3

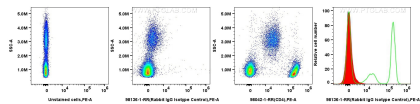
For technical support and original validation data for this product please contact:

T: 1 (888) 4PTGLAB (1-888-478-4522) (toll free in USA), or 1(312) 455-8498 (outside USA)

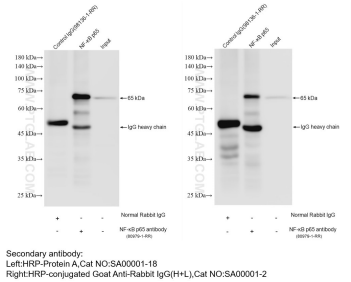
E: [proteintech@ptglab.com](mailto:proteintech@ptglab.com)  
W: [ptglab.com](http://ptglab.com)

**This product is exclusively available under Proteintech Group brand and is not available to purchase from any other manufacturer.**

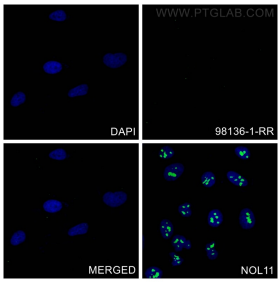
Selected Validation Data



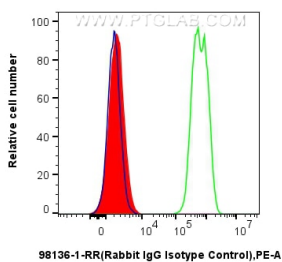
1x10<sup>6</sup> human PBMCs were surface stained with 0.2 ug Rabbit IgG Isotype Control Recombinant Antibody (98136-1-RR, Clone: 240953C9) and PE-Conjugated Goat Anti-Rabbit IgG(H+L) (red in histogram), or 0.2 ug Anti-Human CD4 Rabbit Recombinant Antibody (98042-1-RR) and PE-Conjugated Goat Anti-Rabbit IgG(H+L) (green in histogram), or unstained (blue in histogram). Cells were not fixed.



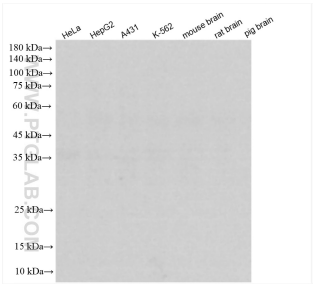
IP result of anti-IgG Isotype Control (IP:98136-1-RR, 4ug; Detection:98136-1-RR 1:0) with HepG2 cells lysate 2000 ug.



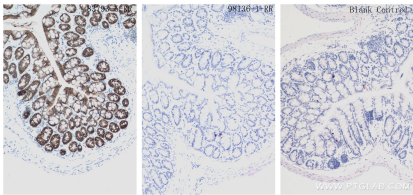
Immunofluorescent analysis of (4% PFA) fixed HeLa cells using IgG Isotype Control antibody (98136-1-RR, Clone: 240953C9) at dilution of 1:200 and CoraLite®488-Conjugated Goat Anti-Rabbit IgG(H+L) (SA00013-2). NOL11 Recombinant antibody (83391-6-RR) is a positive control.



1x10<sup>6</sup> SH-SY5Y cells were intracellularly stained with 0.2 ug Rabbit IgG Isotype Control Recombinant Antibody (98136-1-RR, Clone:240953C9) and PE-Conjugated Goat Anti-Rabbit IgG(H+L) (red), or 0.2 ug PGF Recombinant antibody (83170-4-RR, Clone:230532H3) and APC-Conjugated AffiniPure Goat Anti-Rabbit IgG(H+L) (green), or unstain (blue). Cells were fixed with 4% PFA and permeabilized with Flow Cytometry Perm Buffer (PF00011-C).



HeLa cells were subjected to SDS PAGE followed by western blot with 98136-1-RR (IgG Isotype Control antibody) at dilution of 1:1000 incubated at room temperature for 1.5 hours.



Immunohistochemical analysis of paraffin-embedded mouse colon tissue slide using 98136-1-RR (IgG Isotype Control antibody) at dilution of 2 ug/mL or 83793-5-RR (Cadherin-17 Recombinant antibody) or unstained (under 10x lens). Heat mediated antigen retrieval with Tris-EDTA buffer (pH 9.0).