

For Research Use Only

Anti-Human CD34 Rabbit Recombinant Antibody, PBS Only

Catalog Number: 98145-4-PBS



Basic Information

Catalog Number:

98145-4-PBS

Size:

1mg, 2 mg/ml

Source:

Rabbit

Isotype:

IgG

GenBank Accession Number:

BC039146

GeneID (NCBI):

947

UNIPROT ID:

P28906

Full Name:

CD34 molecule

Calculated MW:

41 kDa

Purification Method:

Protein A purification

CloneNo.:

242069A6

Applications

Tested Applications:

FC

Species Specificity:

human

Background Information

CD34 is a 105- to 120-kDa glycoprophosphoprotein expressed on the majority of hematopoietic stem/progenitor cells, bone marrow stromal cells, capillary endothelial cells, embryonic fibroblasts, and some nerve tissue. CD34 is a commonly used marker for identifying human hematopoietic stem/progenitor cells and mediates cell adhesion and lymphocyte homing by binding L-selectin and E-selectin ligands. CD34 is also one of the best negative selection markers for characterizing and/or isolating human MSCs from bone marrow and other sources. Along with other positive selection markers (such as CD29, CD44, CD90, CD105 and CD166), negative selection markers (such as CD34 and CD45) are used for MSC identification.

Storage

Storage:

Store at -80°C.

Storage Buffer:

PBS Only

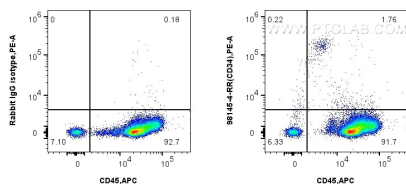
For technical support and original validation data for this product please contact:

T: 1 (888) 4PTGLAB (1-888-478-4522) (toll free in USA), or 1(312) 455-8498 (outside USA)

E: proteintech@ptglab.com
W: ptglab.com

This product is exclusively available under Proteintech Group brand and is not available to purchase from any other manufacturer.

Selected Validation Data



1x10⁶ human PBMCs were surface stained with 0.25 ug Anti-Human CD34 Rabbit RecAb (98145-4-RR, Clone: 242069A6) and PE-Conjugated Goat Anti-Rabbit IgG(H+L), or 0.25 ug Rabbit IgG Isotype Control RecAb (98136-1-RR, Clone: 240953C9). Cells were co-stained with APC Anti-Human CD45 Rabbit Recombinant Antibody (APC-98117, Clone: 241670E10). Cells were incubated with FC Receptor Block prior to staining. Cells were not fixed. This data was

