

For Research Use Only

Anti-Human CD157 Rabbit Recombinant Antibody, PBS Only

Catalog Number: 98146-1-PBS



Basic Information

Catalog Number:

98146-1-PBS

Size:

1mg, 2 mg/ml

Source:

Rabbit

Isotype:

IgG

GenBank Accession Number:

BC012095

GeneID (NCBI):

683

UNIPROT ID:

Q10588

Full Name:

bone marrow stromal cell antigen 1

Calculated MW:

318 aa, 36 kDa

Purification Method:

Protein A purification

CloneNo.:

241424H5

Applications

Tested Applications:

FC

Species Specificity:

human

Background Information

CD157, also known as bone marrow stromal cell antigen 1 (BST-1), or ADP-ribosyl cyclase 2, is a glycosyl phosphatidylinositol-anchored protein that stimulates pre-B-cell growth and has adenosine diphosphate (ADP)-ribosyl cyclase and cyclic ADP-ribose (cADPR) hydrolase activity (PMID: 9473467, 11866528). The two enzymatic activities are responsible for the synthesis and hydrolysis of cADPR, a novel second messenger of calcium release from intracellular calcium stores.

Storage

Storage:

Store at -80°C.

Storage Buffer:

PBS Only

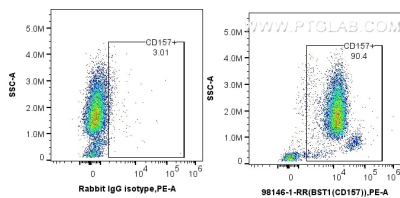
For technical support and original validation data for this product please contact:

T: 1 (888) 4PTGLAB (1-888-478-4522) (toll free
in USA), or 1(312) 455-8498 (outside USA)

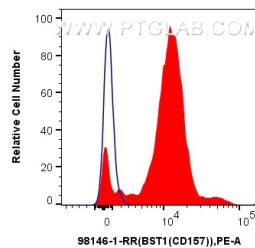
E: proteintech@ptglab.com
W: ptglab.com

This product is exclusively available under Proteintech Group brand and is not available to purchase from any other manufacturer.

Selected Validation Data



1x10⁶ human peripheral blood leukocytes were surface stained with 0.15 ug Anti-Human CD157 Rabbit Recombinant Antibody (98146-1-RR, Clone: 241424H5), or Isotype Control and PE-Conjugated Goat Anti-Rabbit IgG(H+L). Cells were incubated with FC Receptor Block prior to fixing and staining. Cells were not fixed. This data was developed using the same antibody clone with 98146-1-PBS in a different storage buffer formulation.



1x10⁶ human peripheral blood leukocytes were surface stained with 0.15 ug Anti-Human CD157 Rabbit Recombinant Antibody (98146-1-RR, Clone: 241424H5) (red) or Isotype Control (blue), and PE-Conjugated Goat Anti-Rabbit IgG(H+L). Cells were incubated with FC Receptor Block prior to fixing and staining. Cells were not fixed. This data was developed using the same antibody clone with 98146-1-PBS in a different storage buffer formulation.