

For Research Use Only

# Anti-Mouse CTLA-4/CD152 Rabbit Recombinant Antibody

Catalog Number: 98147-1-RR



## Basic Information

Catalog Number:

98147-1-RR

Size:

100ug , 1000 µg/ml

Source:

Rabbit

Isotype:

IgG

GenBank Accession Number:

NM\_009843.4

GeneID (NCBI):

12477

UNIPROT ID:

P09793

Full Name:

cytotoxic T-lymphocyte-associated protein 4

Calculated MW:

25 kDa

Purification Method:

Protein A purification

CloneNo.:

241100B8

## Applications

Tested Applications:

FC

Species Specificity:

mouse

## Background Information

CTLA-4, also known as CD152, belonging to the immunoglobulin superfamily, is primarily found on activated T cells and regulatory T cells (Tregs). CTLA-4 is closely related to the T-cell costimulatory CD28, and both molecules bind to B7-1 and B7-2 on antigen-presenting cells. CTLA-4 acts as a negative regulatory molecule of T-cell responses. Besides the full-length transmembrane form, CTLA-4 also exists in a truncated soluble form (sCTLA-4).

## Storage

Storage:

Store at 2 - 8°C. Stable for one year after shipment.

Storage Buffer:

PBS with 0.09% sodium azide, pH 7.3.

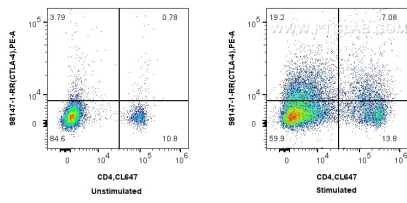
For technical support and original validation data for this product please contact:

T: 1 (888) 4PTGLAB (1-888-478-4522) (toll free in USA), or 1(312) 455-8498 (outside USA)

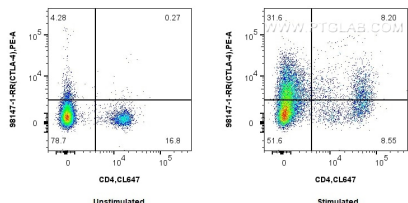
E: [proteintech@ptglab.com](mailto:proteintech@ptglab.com)  
W: [ptglab.com](http://ptglab.com)

This product is exclusively available under Proteintech Group brand and is not available to purchase from any other manufacturer.

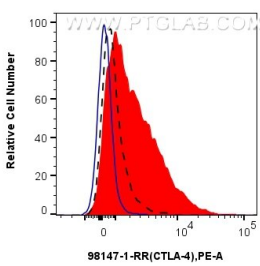
Selected Validation Data



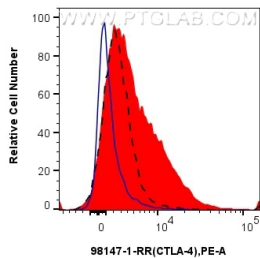
1x10<sup>6</sup> untreated or Con A treated mouse splenocytes were surface stained with 0.25 ug Anti-Mouse CTLA-4/CD152 Rabbit Recombinant Antibody (98147-1-RR, Clone: 241100B8) and PE-Conjugated Goat Anti-Rabbit IgG(H+L). Cells were co-stained with CoraLite® Plus 647 Anti-Mouse CD4. Cells were not fixed.



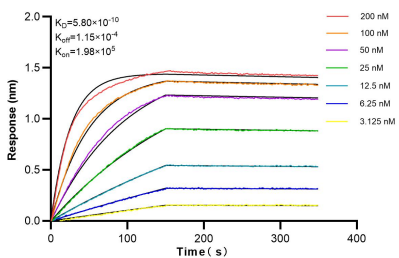
1x10<sup>6</sup> untreated or Con A treated mouse splenocytes were surface stained with 0.25 ug Anti-Mouse CTLA-4/CD152 Rabbit Recombinant Antibody (98147-1-RR, Clone: 241100B8) and PE-Conjugated Goat Anti-Rabbit IgG(H+L). Cells were co-stained with CoraLite® Plus 647 Anti-Mouse CD4. Cells were not fixed.



1x10<sup>6</sup> Con A treated mouse splenocytes were surface stained with 0.25 ug Anti-Mouse CTLA-4/CD152 Rabbit Recombinant Antibody (98147-1-RR, Clone: 241100B8)(red) or Isotype Control (blue), and PE-Conjugated Goat Anti-Rabbit IgG(H+L). 1x10<sup>6</sup> untreated mouse splenocytes were surface stained with 0.25 ug Anti-Mouse CTLA-4/CD152 Rabbit Recombinant Antibody (98147-1-RR, Clone: 241100B8) (black, dashed) and PE-Conjugated Goat Anti-Rabbit IgG(H+L). Cells were not



1x10<sup>6</sup> Con A treated mouse splenocytes were surface stained with 0.25 ug Anti-Mouse CTLA-4/CD152 Rabbit Recombinant Antibody (98147-1-RR, Clone: 241100B8)(red) or Isotype Control (blue) and PE-Conjugated Goat Anti-Rabbit IgG(H+L). 1x10<sup>6</sup> untreated mouse splenocytes were surface stained with 0.25 ug Anti-Mouse CTLA-4/CD152 Rabbit Recombinant Antibody (98147-1-RR, Clone: 241100B8) (black, dashed) and PE-Conjugated Goat Anti-Rabbit IgG(H+L). Cells were not



Biolayer interferometry (BLI) kinetic assays of 98147-1-RR against Mouse CTLA-4/CD152 were performed. The affinity constant is 0.580 nM.