

For Research Use Only

# Anti-Human IL-18R1/CD218a Rabbit Recombinant Antibody, PBS Only

Catalog Number: 98150-2-PBS



## Basic Information

Catalog Number:

98150-2-PBS

Size:

1mg, 2 mg/ml

Source:

Rabbit

Isotype:

IgG

GenBank Accession Number:

BC093975

GeneID (NCBI):

8809

UNIPROT ID:

Q13478

Full Name:

interleukin 18 receptor 1

Calculated MW:

541 aa, 62 kDa

Purification Method:

Protein A purification

CloneNo.:

241673D3

## Applications

Tested Applications:

FC

Species Specificity:

human

## Storage

Storage:

Store at -80°C.

Storage Buffer:

PBS Only

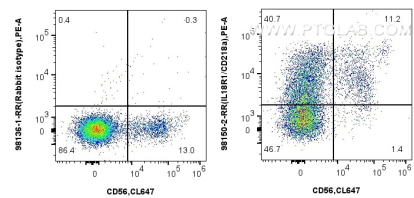
For technical support and original validation data for this product please contact:

T: 1 (888) 4PTGLAB (1-888-478-4522) (toll free in USA), or 1(312) 455-8498 (outside USA)

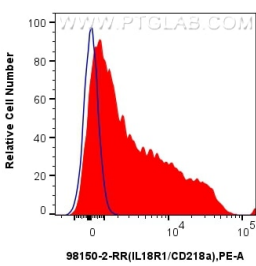
E: [proteintech@ptglab.com](mailto:proteintech@ptglab.com)  
W: [ptglab.com](http://ptglab.com)

This product is exclusively available under Proteintech Group brand and is not available to purchase from any other manufacturer.

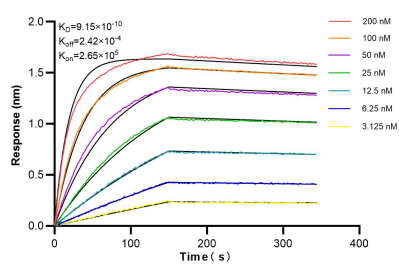
Selected Validation Data



1x10<sup>6</sup> human peripheral blood leukocytes were surface stained with 0.25 ug Anti-Human IL-18R1/CD218a Rabbit Recombinant Antibody (98150-2-RR, Clone:241673D3) or Rabbit IgG Isotype Control Recombinant Antibody (98136-1-RR, Clone: 240953C9), and PE-conjugated Goat Anti-Rabbit IgG. Cells were co-stained with CoraLite® Plus 647 Anti-Human NCAM1/CD56). Cells were incubated with FC Receptor Block prior to staining. Cells were not fixed. This data was



1x10<sup>6</sup> human peripheral blood leukocytes were surface stained with 0.25 ug Anti-Human IL-18R1/CD218a Rabbit Recombinant Antibody (98150-2-RR, Clone: 241673D3) (red) or Rabbit IgG Isotype Control Recombinant Antibody (98136-1-RR, Clone: 240953C9)(blue), and PE-conjugated Goat Anti-Rabbit IgG. Cells were incubated with FC Receptor Block prior to staining. Cells were not fixed. This data was developed using the same antibody clone with 98150-2-



Biolayer interferometry (BLI) kinetic assays of 98150-2-RR against Human IL-18R1/CD218a were performed. The affinity constant is 0.915 nM.