

For Research Use Only

# Anti-Human CRTAM/CD355 Rabbit Recombinant Antibody

Catalog Number: 98157-1-RR



## Basic Information

Catalog Number:

98157-1-RR

Size:

100ug, 1000 µg/ml

Source:

Rabbit

Isotype:

IgG

GenBank Accession Number:

NM\_019604.4

GeneID (NCBI):

56253

UNIPROT ID:

O95727-1

Full Name:

cytotoxic and regulatory T cell molecule

Calculated MW:

45 kDa

Purification Method:

Protein A purification

CloneNo.:

241280B12

## Applications

Tested Applications:

FC

Species Specificity:

human

## Background Information

Cytotoxic and regulatory T cell molecule (CRTAM, also known as CD355) is an immunoglobulin-superfamily transmembrane protein with V and C1-like Ig domains, which is involved in epithelial cell adhesion (PMID: 18329370; 20556794). CRTAM is critical to instruct the differentiation of CD4+ cytotoxic T cells (CTL) through the induction of eomesodermin and CTL-related genes (PMID: 26694968). It also regulates CD8+ T cell retention within the lymph node and eventually effector function (PMID: 19752223).

## Storage

Storage:

Store at 2 - 8°C. Stable for one year after shipment.

Storage Buffer:

PBS with 0.09% sodium azide, pH 7.3.

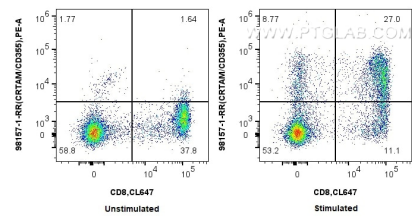
For technical support and original validation data for this product please contact:

T: 1 (888) 4PTGLAB (1-888-478-4522) (toll free in USA), or 1(312) 455-8498 (outside USA)

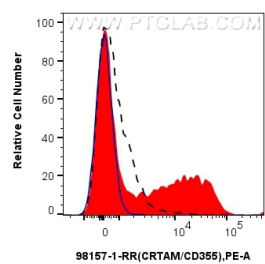
E: [proteintech@ptglab.com](mailto:proteintech@ptglab.com)  
W: [ptglab.com](http://ptglab.com)

This product is exclusively available under Proteintech Group brand and is not available to purchase from any other manufacturer.

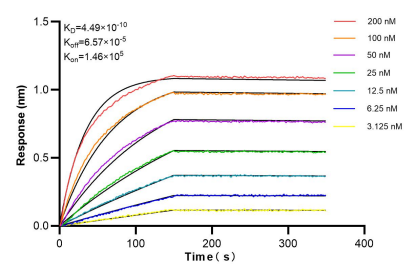
Selected Validation Data



1x10<sup>6</sup> untreated or PMA and ionomycin treated human PBMCs were surface stained with 0.25 ug Anti-Human CRTAM/CD355 Rabbit Recombinant Antibody (98157-1-RR, Clone: 241280B12) and PE-conjugated Goat Anti-Rabbit IgG. Cells were co-stained with CoraLite® Plus 647 Anti-Human CD8. Cells were not fixed.



1x10<sup>6</sup> PMA and ionomycin treated human PBMCs were surface stained with 0.25 ug Anti-Human CRTAM/CD355 Rabbit Recombinant Antibody (98157-1-RR, Clone: 241280B12) (red) or Rabbit IgG Isotype Control Recombinant Antibody (98136-1-RR, Clone: 240953C9) (blue), and PE-conjugated Goat Anti-Rabbit IgG. 1x10<sup>6</sup> untreated human PBMCs were surface stained with 0.25 ug Anti-Human CRTAM/CD355 Rabbit Recombinant Antibody (98157-1-RR, Clone: 241280B12) and



Biolayer interferometry (BLI) kinetic assays of 98157-1-RR against Human CRTAM/CD355 were performed. The affinity constant is 0.449 nM.