

For Research Use Only

# Anti-Mouse CD6 Rabbit Recombinant Antibody, PBS Only

Catalog Number: 98161-1-PBS



## Basic Information

Catalog Number:

98161-1-PBS

Size:

1mg, 2 mg/ml

Source:

Rabbit

Isotype:

IgG

Immunogen Catalog Number:

EG1401

GenBank Accession Number:

NM\_009852.3

GeneID (NCBI):

12511

UNIPROT ID:

Q61003-1

Full Name:

CD6 antigen

Calculated MW:

72kDa

Purification Method:

Protein A purification

CloneNo.:

241471F3

## Applications

Tested Applications:

FC

Species Specificity:

mouse

## Background Information

CD6 is a type I transmembrane glycoprotein that belongs to the scavenger receptor cysteine-rich superfamily (PMID: 21880988). It is composed of an extracellular region, which consists of three tandem SRCR domains, a transmembrane region, and a cytoplasmic tail devoid of intrinsic catalytic activity but harboring several phosphorylatable residues suitable for intracellular signal transduction (PMID: 38139340; 23711376). CD6 is expressed by T cells, medullary thymocytes, a subset of B cells and NK cells, and in some cells of the brain (PMID: 1919444; 21178331). CD6 plays a role in lymphocyte activation, proliferation, and survival processes via interaction with its endogenous ligands.

## Storage

Storage:

Store at -80°C.

Storage Buffer:

PBS only, pH7.3

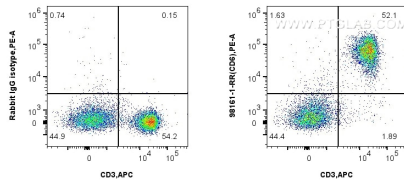
For technical support and original validation data for this product please contact:

T: 1 (888) 4PTGLAB (1-888-478-4522) (toll free in USA), or 1(312) 455-8498 (outside USA)

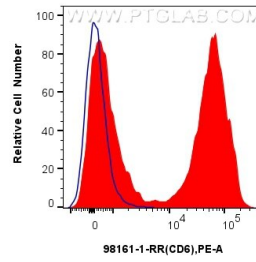
E: [proteintech@ptglab.com](mailto:proteintech@ptglab.com)  
W: [ptglab.com](http://ptglab.com)

This product is exclusively available under Proteintech Group brand and is not available to purchase from any other manufacturer.

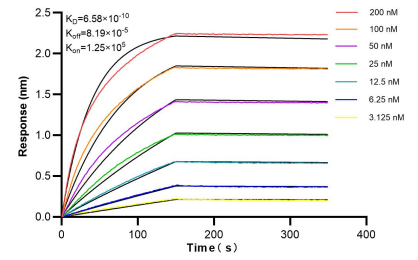
## Selected Validation Data



1x10<sup>6</sup> BALB/c mouse splenocytes were surface stained with 0.25 ug Anti-Mouse CD6 Rabbit Recombinant Antibody (98161-1-RR, Clone:241471F3) or 0.25 ug Isotype Control, and PE-Conjugated Goat Anti-Rabbit IgG(H+L). Cells were co-stained with APC Anti-Human CD3. Cells were not fixed. This data was developed using the same antibody clone with 98161-1-PBS in a different storage buffer formulation.



1x10<sup>6</sup> BALB/c mouse splenocytes were surface stained with 0.25 ug Anti-Mouse CD6 Rabbit Recombinant Antibody (98161-1-RR, Clone:241471F3) (red) or 0.25 ug Isotype Control (blue), and PE-Conjugated Goat Anti-Rabbit IgG(H+L). Cells were not fixed. This data was developed using the same antibody clone with 98161-1-PBS in a different storage buffer formulation.



Biolayer interferometry (BLI) kinetic assays of 98161-1-RR against Mouse CD6 were performed. The affinity constant is 0.658 nM.