

For Research Use Only

Anti-Human CD48 Rabbit Recombinant Antibody, PBS Only

Catalog Number: 98170-1-PBS



Basic Information

Catalog Number:

98170-1-PBS

Size:

1mg, 2 mg/ml

Source:

Rabbit

Isotype:

IgG

GenBank Accession Number:

BC016182

GeneID (NCBI):

962

UNIPROT ID:

P09326

Full Name:

CD48 molecule

Calculated MW:

43 kDa

Purification Method:

Protein A purification

CloneNo.:

241389F8

Applications

Tested Applications:

FC

Species Specificity:

human

Background Information

Signaling lymphocytic activation molecule family 2 (SLAMF2, CD48) is an adhesion and costimulatory molecule expressed constitutively on most hematopoietic cells, particularly in antigen-presenting cells (APC). CD48 is expressed on all the hematopoietic cells, both in humans and mice, except for murine neutrophils and long-term HSC. CD48 exists as both a membrane-bound (mCD48) and a soluble (sCD48) form. CD48 can activate T cells, antigen-presenting cells and granulocytes, by binding to CD2 or bacterial FimH, and through cell intrinsic effects. Interactions between CD48 and its high-affinity ligand CD244 are more complex, with both stimulatory and inhibitory outcomes. CD48 expression is increased in autoimmunity and allergy diseases, and anti-CD48 monoclonal antibodies have been shown to attenuate experimental autoimmune encephalomyelitis.

Storage

Storage:

Store at -80°C.

Storage Buffer:

PBS Only

For technical support and original validation data for this product please contact:

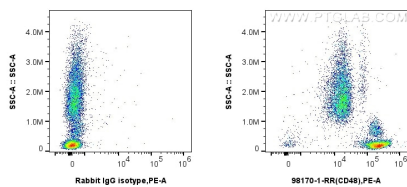
T: 1 (888) 4PTGLAB (1-888-478-4522) (toll free in USA), or 1(312) 455-8498 (outside USA)

E: proteintech@ptglab.com

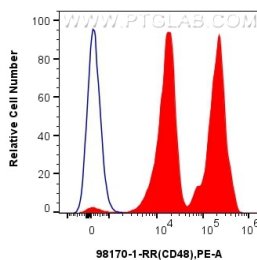
W: ptglab.com

This product is exclusively available under Proteintech Group brand and is not available to purchase from any other manufacturer.

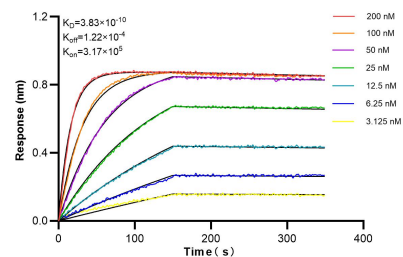
Selected Validation Data



1x10⁶ human peripheral blood leukocytes were surface stained with 0.25 ug Anti-Human CD48 Rabbit Recombinant Antibody (98170-1-RR, Clone:241389F8) or 0.25 ug Isotype Control, and PE-Conjugated Goat Anti-Rabbit IgG(H+L). Cells were incubated with FC Receptor Block prior to staining. Cells were not fixed. This data was developed using the same antibody clone with 98170-1-PBS in a different storage buffer formulation.



1x10⁶ human peripheral blood leukocytes were surface stained with 0.25 ug Anti-Human CD48 Rabbit Recombinant Antibody (98170-1-RR, Clone:241389F8) (red) or 0.25 ug Isotype Control (blue), and PE-Conjugated Goat Anti-Rabbit IgG(H+L). Cells were incubated with FC Receptor Block prior to staining. Cells were not fixed. This data was developed using the same antibody clone with 98170-1-PBS in a different storage buffer formulation.



Biolayer interferometry (BLI) kinetic assays of 98170-1-RR against Human CD48 were performed. The affinity constant is 0.383 nM.