

For Research Use Only

Anti-Mouse CD24 Rabbit Recombinant Antibody, PBS Only

Catalog Number: 98176-1-PBS



Basic Information

Catalog Number:

98176-1-PBS

Size:

1mg, 2 mg/ml

Source:

Rabbit

Isotype:

IgG

GenBank Accession Number:

NM_009846.2

GeneID (NCBI):

12484

UNIPROT ID:

P24807

Full Name:

CD24a antigen

Calculated MW:

8kDa

Purification Method:

Protein A purification

CloneNo.:

241691D7

Applications

Tested Applications:

FC

Species Specificity:

mouse

Background Information

CD24 (known as heat stable antigen) is a small highly glycosylated GPI-linked sialoprotein. It is normally expressed at the surface of most B lymphocytes and differentiating neuroblasts, and it is also up-regulated in a wide variety of cancers. Studies have shown that CD24 functions in the regulation of B-cell apoptosis, leukocyte signal transduction, and leukocyte adhesion.

Storage

Storage:

Store at -80°C.

Storage Buffer:

PBS Only

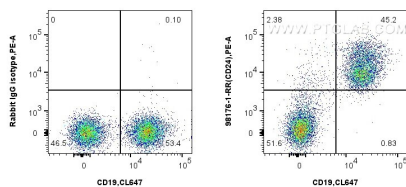
For technical support and original validation data for this product please contact:

T: 1 (888) 4PTGLAB (1-888-478-4522) (toll free in USA), or 1(312) 455-8498 (outside USA)

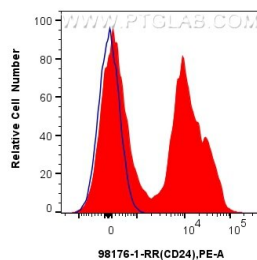
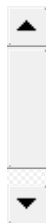
E: proteintech@ptglab.com
W: ptglab.com

This product is exclusively available under Proteintech Group brand and is not available to purchase from any other manufacturer.

Selected Validation Data



1x10⁶ mouse splenocytes were surface stained with 0.25 ug Anti-Mouse CD24 Rabbit Recombinant Antibody (98176-1-RR, Clone:241691D7) or 0.25 ug Rabbit IgG Isotype Control Recombinant Antibody (98136-1-RR, Clone: 240953C9), and PE-Conjugated Goat Anti-Rabbit IgG(H+L). Cells were then stained with CoraLite® Plus 647 Anti-Mouse CD19. Cells were not fixed. This data was developed using the same antibody clone with 98176-1-PBS in a different storage



1x10⁶ mouse splenocytes were surface stained with 0.25 ug Anti-Mouse CD24 Rabbit Recombinant Antibody (98176-1-RR, Clone:241691D7) (red) or 0.25 ug Rabbit IgG Isotype Control Recombinant Antibody (98136-1-RR, Clone: 240953C9) (blue), and PE-Conjugated Goat Anti-Rabbit IgG(H+L). Cells were not fixed. This data was developed using the same antibody clone with 98176-1-PBS in a different storage buffer formulation.